

# **AMCHAM** **Sustainability** **Seminar 2022**

Solutions for ESG risk factors  
that companies need  
to overcome in 2022



# AMCHAM Sustainability Seminar 2022

Solutions for ESG risk factors that  
companies need to overcome in 2022

## Our Generous Partners



# AMCHAM SUSTAINABILITY SEMINAR 2022

## PROGRAM & SPEAKERS

TIME	SESSION / TOPIC	SPEAKERS
8:30am - 9:00am	<b>Registration</b>	
9:00am - 9:05am	<b>Opening Remarks</b>	<b>James Kim</b> Chairman & CEO, AMCHAM Korea
9:05am - 9:10am	<b>Welcoming Remarks</b>	<b>H.E. Ban Ki-moon</b> The 8th UN Secretary-General / President & Chair, Global Green Growth Institute
9:10am - 9:15am	<b>Congratulatory Remarks I</b>	<b>H.E. Hong Jungmin</b> Member of the 21st National Assembly
9:15am - 9:20am	<b>Congratulatory Remarks II</b>	<b>Kim Beob-jeong</b> Deputy Minister for Climate Change and Carbon Neutral Policy, Ministry of Environment, Republic of Korea
9:20am - 9:25 am	<b>Congratulatory Remarks III</b>	<b>Gregory Briscoe</b> Minister Counselor for Commercial Affairs, U.S. Embassy Seoul
9:25am - 9:45am	<b>Presentation</b> An Introduction of Sustainable Districts of GGFEZ	<b>Presenter</b> <b>Shin Nang-hyun</b> Commissioner, Gyeonggi Free Economic Zone Authority
9:45am - 10:05am	<b>Presentation</b> ESG and Sustainability Solutions for the Business	<b>Presenter</b> <b>Carlos Correia</b> VP & GM, Asset & Sustainability, UL
10:05am - 10:25am	<b>Presentation</b> Achieving Sustainable Development Goals with ESGs	<b>Presenter</b> <b>Kumjoo Huh</b> EVP, Head of New Growth Engines and Govt' Relations, Kyobo Life Insurance
10:25am - 10:45am	<b>Presentation</b> ESG's Legal Implications & Businesses' Response Strategies	<b>Presenter</b> <b>June Yong Lee</b> Foreign Attorney, Kim & Chang
10:45am - 11:05am	<b>Presentation</b> Building a World That Works for Tomorrow	<b>Presenter</b> <b>Dongwon Kim</b> Government Engagement Director, GE Korea
11:05am - 11:20am	<b>Coffee Break &amp; Networking</b>	
11:20am - 12:10pm	<b>Panel Discussion</b> Solutions for ESG Risk Factors that Companies Need to Overcome	<b>Moderator</b> <b>Yonghee Yoon</b> Partner, Yulchon LLC  <b>Panelists</b> <b>Khoi Do</b> Director, Market Development & Innovation, UL <b>Seong Young Yoon</b> Sustainability Manager, HP Korea <b>June Yong Lee</b> Foreign Attorney, Kim & Chang <b>Dongwon Kim</b> Government Engagement Director, GE Korea
12:10pm - 1:00pm	<b>Lunch</b>	

# AMCHAM SUSTAINABILITY SEMINAR 2022

## 프로그램 및 연사

TIME	SESSION / TOPIC	SPEAKERS
9:00am - 9:05am	개회사	<b>제임스 김</b> 주한미국상공회의소 회장 겸 대표이사
9:05am - 9:10am	환영사	<b>반기문</b> 제8대 유엔사무총장 / 글로벌녹색성장기구(GGGI) 의장
9:10am - 9:15am	축사 I	<b>홍정민</b> 제21대 국회의원
9:15am - 9:20am	축사 II	<b>김법정</b> 환경부 기후탄소정책실장
9:20am - 9:25 am	축사 III	<b>그레고리 브리스코</b> 주한미국대사관 상무공사
9:25am - 9:45am	<b>특별 발표</b> 경기경제자유구역 지속가능 지구 소개	<b>신남현</b> 경기경제자유구역청장
9:45am - 10:05am	<b>발표 I</b> 지속가능한 제품 생산을 위한 UL 표준과 인증 서비스	<b>카를로스 코레아</b> UL 사장
10:05am - 10:25am	<b>발표 II</b> ESG와 지속가능성 달성을 위한 교보생명 사람중심 이해관계자 경영	<b>허금주</b> 교보생명보험 전무
10:25am - 10:45am	<b>발표 III</b> ESG의 법적 쟁점과 기업의 대응전략	<b>이준용</b> 김·장 법률사무소 외국변호사
10:45am - 11:05am	<b>발표 IV</b> 더 나은 내일을 위한 세상	<b>김동원</b> GE 코리아 대외협력총괄이사
11:05am - 11:20am	네트워킹 휴식	
11:20am - 12:10pm	<b>패널 토론</b> 지속가능한 ESG 달성을 위한 분야별 과제와 달성 전략	<b>좌장</b> <b>윤용희</b> 법무법인(유) 윤촌 변호사 <b>패널</b> <b>코이 도</b> UL 마켓혁신개발팀장 <b>윤성영</b> HP 코리아 지속가능성팀 부장 <b>이준용</b> 김·장 법률사무소 외국변호사 <b>김동원</b> GE 코리아 대외협력총괄이사
12:10pm - 1:00pm	오찬	





# Streamline your ESG reporting

Choosing the right solution for ESG or sustainability reporting can be challenging. UL can help ease the burden with simple, comprehensive tools that consider your business needs. From advisory services to software selection and implementation, we have you covered for your ESG reporting journey.

Our 20+ years of environmental and sustainability reporting make UL a trusted industry leader. Our resources worldwide lend peerless expertise to streamline your ESG reporting.

**Partner with UL to measure, manage, report and act on sustainability goals.  
Get started today at [UL.com/ESG](https://ul.com/ESG)**



**UL Korea, Ltd.**  
26<sup>th</sup> Floor, Gangnam Finance Center  
152 Tereran-ro, Gangnam-gu, Seoul  
06236, Korea

## Empowering Trust<sup>®</sup>

UL and the UL logo are trademarks of UL LLC © 2022.







# Creating a global base for new growth engine industries for the era of Yellow Sea

Creation of an innovative ecosystem for new materials and parts manufacturing industry for the worldwide 4th Industrial Revolution

Creating an ecosystem in connection with the research center for unmanned ground/underwater/aerial vehicles



## Gyeonggi Free Economic Zone (GGFEZ) Business District

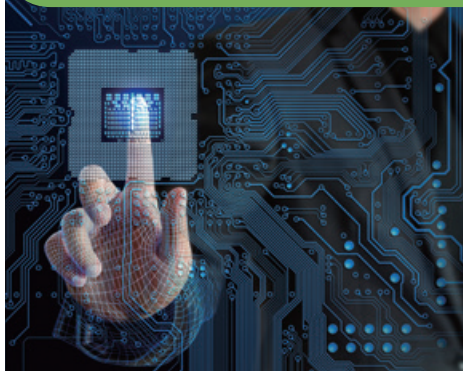
### Siheung Baegot District

Creating a base for unmanned vehicles



### Pyeongtaek Poseung (BIX) District

Creating a knowledge-based high-tech cluster



### Pyeongtaek Hyeondeok District

Creating a global settlement environment



# **AMCHAM**

## **Sustainability Seminar 2022**

June 9, 2022  
Conrad Seoul

Solutions for ESG risk factors  
that companies need  
to overcome in 2022



## **OPENING CEREMONY**

**James Kim**

Chairman & CEO, AMCHAM Korea

**H.E. Ban Ki-moon**

The 8th UN Secretary-General /  
President & Chair, Global Green Growth Institute

**H.E. Hong Jungmin**

Member of the 21st National Assembly

**Kim Beob-jeong**

Deputy Minister for Climate Change and Carbon Neutral Policy,  
Ministry of Environment, Republic of Korea

**Gregory Briscoe**

Minister Counselor for Commercial Affairs, U.S. Embassy Seoul

---

# AMCHAM SUSTAINABILITY SEMINAR 2022

---

## OPENING REMARKS / 개회사

---



### **James Kim** 제임스 김

**Chairman & CEO, AMCHAM Korea**  
주한미국상공회의소 회장 겸 대표이사

---

James Kim is Chairman and CEO of AMCHAM Korea. Prior to AMCHAM, Mr. Kim served as Chairman, CEO and President of GM Korea. Mr. Kim is a Korean-American who is passionate about promoting the commercial interests between the United States and Korea.

At GM Korea, Mr. Kim was responsible for the total operations with 17,000 employees (sales, manufacturing, distribution and design) in Korea. Mr. Kim also had oversight responsibilities with GM's joint venture operations in Uzbekistan.

Mr. Kim joined GM Korea from Microsoft Korea, where he had served as Country Manager and CEO. His previous roles include CEO of Yahoo! Korea and Asia Regional Vice President of Overture (a wholly owned subsidiary of Yahoo).

Prior to Yahoo, Mr. Kim worked predominantly in the United States, where he was the Managing Partner at Palisades Advisors, based in New York. Prior to Palisades, he held other positions including CEO at Corcoran.com, CEO of Vivien International and National Marketing Manager at AT&T.

Mr. Kim also serves as Chairman of the Board of Directors of Mirae Assets Global Investment and is also an Independent Outside Director of Almonty Industries (TSX: ALMTF). Mr. Kim appears in major Korean and global media as an expert in Korea and US dynamics. Mr. Kim holds a Bachelor of Arts in Economics from the University of California, Los Angeles and a Master of Business Administration from Harvard University.

As an avid tennis player, Mr. Kim serves as an official Advisor to top 100 ranked tennis professional, Kwon Soon Woo and is also a "Wilson Brand Ambassador." Mr. Kim lives in Seoul, Korea with his spouse and has two grown children.

---

# AMCHAM SUSTAINABILITY SEMINAR 2022

---

## WELCOMING REMARKS / 환영사

---



### **H.E. Ban Ki-moon 반기문**

**The 8th UN Secretary-General /  
President & Chair, Global Green Growth Institute**  
제8대 유엔사무총장 / 글로벌녹색성장기구(GGGI) 의장

---

On February 20, 2018, Mr. Ban Ki-moon was unanimously elected as the President of the Assembly and Chair of the Council by the two respective governance organs of the Global Green Growth Institute (GGGI). His leadership has been instrumental for the Institute to help its Members adopt the green growth—environmentally sustainable and socially inclusive—model of development.

Prior to the current appointments above, Mr. Ban served two consecutive terms as the Eighth Secretary-General of the United Nations (UN) from 2007 to 2016, during which time he worked to build bridges, to give voice to the world's most vulnerable and marginalized people, and to bring transparency and effectiveness to the UN. He successfully initiated global action to combat climate change that culminated in the adoption and rapid entry into force the landmark Paris Climate Change Agreement in 2016. He worked closely with member states to shape the 2030 Agenda for Sustainable Development and to establish UN Women, the latter of which advances global gender equality and women's empowerment. He also led major efforts to strengthen UN peace operations, protect human rights, improve humanitarian assistance, prevent violent extremism and revitalize disarmament activities.

Mr. Ban holds a BA in International Relations from Seoul National University and MA in Public Administration from the Kennedy School of Government at Harvard University.

---

# AMCHAM SUSTAINABILITY SEMINAR 2022

---

## CONGRATULATORY REMARKS / 축하

---



### H.E. Hong Jungmin 홍정민

**Member of the 21st National Assembly**  
제21대 국회의원

---

#### Education

2006-2011 PhD in Economics, Seoul National University, Seoul, Korea  
2004-2006 Master's degree in Economics, Seoul National University, Seoul, Korea  
1997-2001 Bachelor's Degree in Economics, Seoul National University, Seoul, Korea  
(Minored in Law)

#### Experience

Current Positions

Member of the 21st National Assembly

#### Previous Positions

[Political Activities]

2020-2021 Spokesperson, Democratic Party of Korea  
2020-2021 Member of National Crisis Committee, Democratic Party of Korea  
2020 Vice Chairman of the Policy Committee, Democratic Party of Korea

[Major Career]

2018-2020 Representative Lawyer and CEO, Lawstory Co., Ltd  
2014-2018 Senior Researcher, Samsung Economics Research Institute  
2011-2014 Judicial Research and Training Institute  
2001-2005 Samsung Fire & Marine Insurance Co., Ltd

[Major Activities]

2017-2020 Planning Director, Korean Society of Law and Economics  
2019-2020 Director, Korean Society of Artificial Intelligence Law  
2019-2020 Consulting Lawyer, Korean Federation of Fintech  
2019-2020 Academic Member, Korean Bar Association

[Qualification] Bar Admission (Korea), Patent Attorney (Korea)



---

## AMCHAM SUSTAINABILITY SEMINAR 2022

---

### CONGRATULATORY REMARKS / 축하

---



### **Kim Beob-jeong** 김법정

**Deputy Minister for Climate Change and Carbon Neutral Policy,  
Ministry of Environment, Republic of Korea**  
환경부 기후탄소정책실장

---

Mr. Kim Beob-jeong is the Deputy Minister for Climate Change and Carbon Neutral Policy Office of the Ministry of Environment of the Republic of Korea. He has extensive experience in public administration and policies concerning the environment.

He started his career in government departments in 1993. Since joining the Ministry of Environment, he has worked on a range of domestic and international environmental issues while serving in the positions of the Deputy Minister for Planning and Coordination, Secretary General of the NCCA (National Council on Climate and Air Quality of Korea), Director General for Air Quality Policy, Director and Director General for Climate and Air Quality Policy, etc.

He obtained his bachelor's degree in International Economics at the Seoul National University and his master's degree in Environmental Studies at the University of Oregon.



---

# AMCHAM SUSTAINABILITY SEMINAR 2022

---

## CONGRATULATORY REMARKS / 축하

---



### **Gregory Briscoe** 그레고리 브리스코

**Minister Counselor for Commercial Affairs, U.S. Embassy Seoul**  
주한미국대사관 상무공사

---

Greg Briscoe is the Senior Commercial Officer in Seoul, Korea where he directs the U.S. Embassy's export and investment promotion initiatives. Mr. Briscoe is excited about the opportunities for U.S. firms and localities in Korea and sees commercial work playing a critical role in bridging gaps and leading to stabilization in the region.

Prior to Seoul, Greg spent three years in Tel Aviv and Jerusalem, Israel as the Senior Commercial Officer at the U.S. Embassy, now in Jerusalem. He focused his team on IT, smart cities, aerospace, life sciences and Israel's innovation ecosystem. Additionally, Mr. Briscoe oversaw U.S. Government commercial engagement in the West Bank and Gaza via his team at the U.S. Consulate General in Jerusalem.

Before Tel Aviv, Mr. Briscoe spent six years in Tokyo, Japan where he led Embassy efforts in investment promotion and commercial advocacy and promotion initiatives in energy, environmental services, aerospace, defense, and transportation. Mr. Briscoe also focused on promoting greater access to Japan's large basic industry markets, working directly with Japanese Government officials to ensure a fair playing field for U.S. companies.

Prior to Tokyo, Mr. Briscoe spent two years in Memphis, Tennessee working directly with FedEx Corporation to assist U.S. small- and medium-sized exporters, serving as the Commercial Service's primary contact on events and communications under the FedEx corporate partnership program. Mr. Briscoe's efforts saw increasing numbers of FedEx clients taking advantage of Commercial Service expertise and assistance and, as result, expanding their export profiles.

Mr. Briscoe has also served in Paris, France and a previous tour in Tokyo.

Mr. Briscoe received his BA in International Relations from Brigham Young University and an MBA from George Washington University. He is married and has four children.

# AMCHAM Sustainability Seminar 2022

June 9, 2022  
Conrad Seoul

Solutions for ESG risk factors  
that companies need  
to overcome in 2022



## PRESENTATION

**Shin Nang-hyun**

Commissioner, Gyeonggi Free Economic Zone Authority

**Carlos Correia**

VP & GM, Asset & Sustainability, UL

**Kumjoo Huh**

EVP, Head of New Growth Engines and Govt' Relations,  
Kyobo Life Insurance

**June Yong Lee**

Foreign Attorney, Kim & Chang

**Dongwon Kim**

Government Engagement Director, GE Korea

---

# AMCHAM SUSTAINABILITY SEMINAR 2022

---

## AN INTRODUCTION OF SUSTAINABLE DISTRICTS OF GGFEZ 경기경제자유구역 지속가능 지구 소개

---



### **Shin Nang-hyun** 신낭현

**Commissioner, Gyeonggi Free Economic Zone Authority**  
경기경제자유구역청장

---

#### **학력**

- University of New Jersey 대학원 도시 및 지역학과(석사)
- KDI 국제정책대학원 국제정치경제학과(석사)
- 강원대학교 행정학과(학사)

#### **주요경력**

- 제8대 경기도 경기경제자유구역청장('22.01 ~ 현재)
- 제32대 경기도 부천시 부시장('20.01 ~ '20.12)
- 경기도 의회사무처장('19.01 ~ '20.12)
- 경기도 보건복지국장('17.01 ~ '18.12)
- 경기도 파주시 부시장('15.01 ~ '15.12)
- 경기도 경제정책기획관('13.07 ~ '14.01)
- 경기도 연천군 부군수('13.01 ~ '13.06)



1



2



3

I . Overview of Gyeonggi

01. Location

**Northeast Asia**

- ✓ **GDP: USD 21 Trillion**(22% of World's GDP)
- ✓ **Population: 1.6 Billion**(21% of the World's Population)

**Republic of Korea**

- ✓ **Population: 52 Million**
- ✓ **Economic Scale: No.11 in the World**
- ✓ **GDP: USD 1.6 Trillion**(2019)

**Gyeonggi Province**

- ✓ **Population: 13.7 Million**(25.8% of Korea)
- ✓ **GRDP: USD 479 Billion**(24.0% of Korea)
- ✓ **Comparable to Norway's GDP**

※ Source: KOTRA, IMF

4



## 01. Economic Indicators of Korea



※ Source : IMF, KITA, BOK, Korea Exchange

- 5 -

5

## 02. Status of Economic ①



- 6 -

6

## 02. Status of Economic ②



- 7 -

7

## 03. R&D Investment / HR Resource

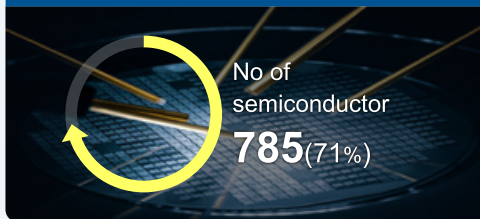


- 8 -

8

## 04. Industrial Cluster

### Memory Production No.1 Global



### R&D Investment No.1 Korea



### Auto Production No. 5 Global



### Auto Logistics Vehicle Handling No. 3 Global



※ Source : OMDIA 2021, Automotive news 2020, Pyeongtaek Port Corporation 2020

- 9 -

9

## 04. Industrial Cluster - Semiconductor

### Samsung Campus in Pyeongtaek, Gyeonggi



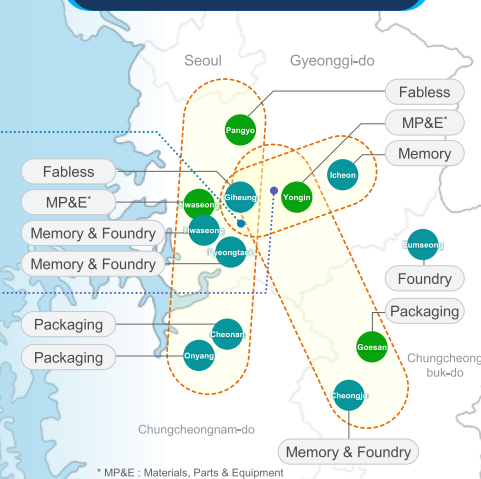
### Pangyo District, Seongnam, Gyeonggi



### SK Hynix & Complex in Yongin, Gyeonggi



### K - Semiconductor Belt

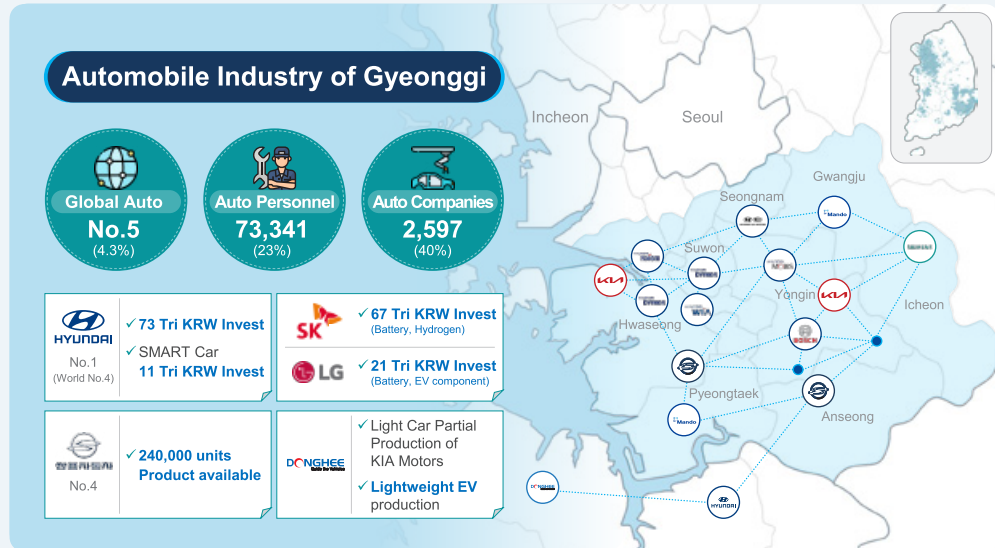


- 10 -

10



## 04. Industrial Cluster - Automobile

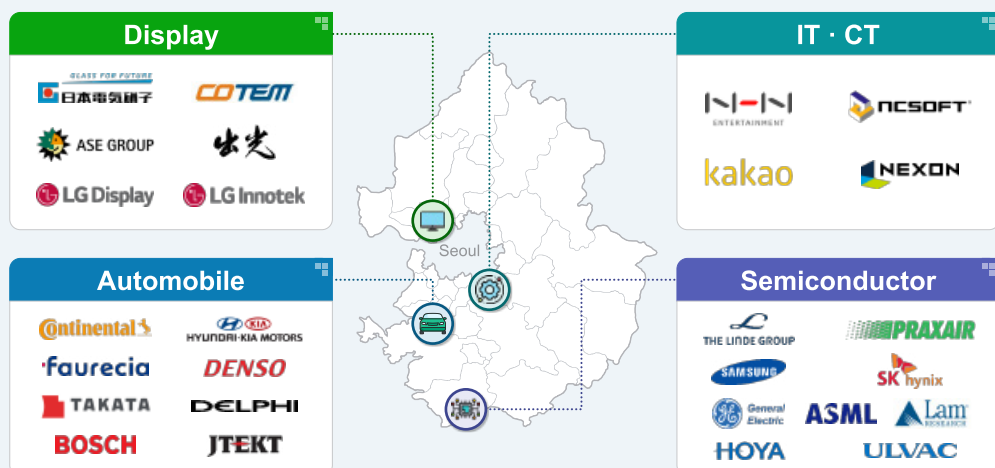


- 11 -

11

## 04. Major Industrial Cluster

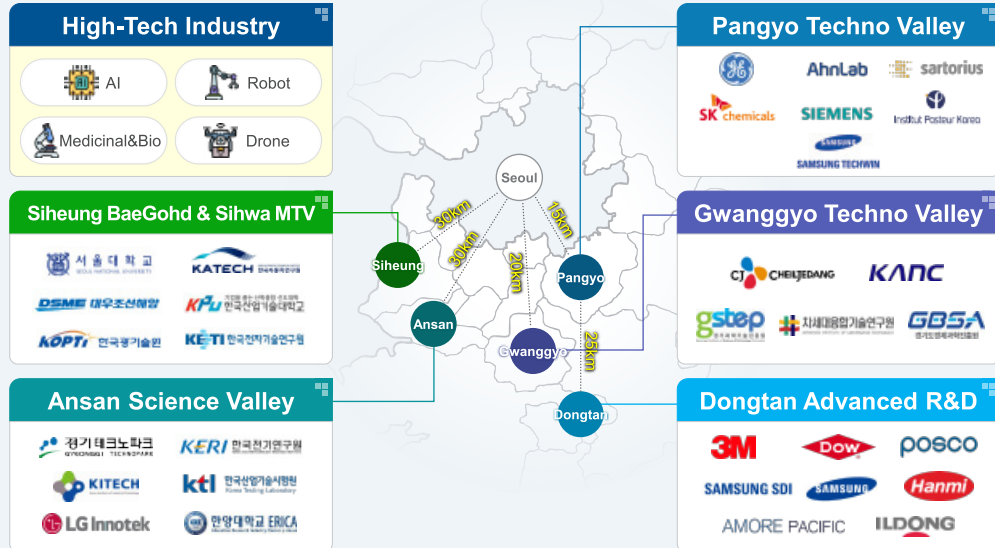
**126.7 billion** in Foreign Enterprise Investment<sup>(19; cumulative)</sup> / **2,959** Foreign Enterprises<sup>(21)</sup>



- 12 -

12

## 04. R&D Cluster



13



14

## 01. GGFEZ Overview

### PyeongTaek(BIX)District

Create SMART  
Mobility Center



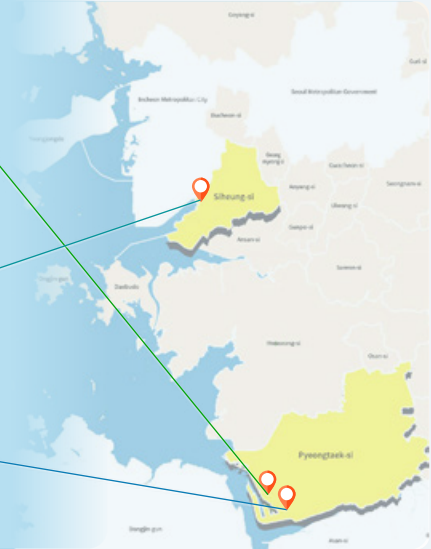
### Siheung BaeGohd District

Unmanned Ground/  
Aerial/Marine Vehicles &  
Medical Complex



### Hyeondeok District

Hydrogen City &  
Global Settlement Environment



- 15 -

15

## 02. PyeongTaek BIX District - Create SMART Mobility Center



### Overview

Electricity

Electron

Auto

Machinery

Chemical

Transit Carrier

Logistic

Location

Size

Master Developer

Pyeongtaek Poseung Area

2.04km<sup>2</sup>

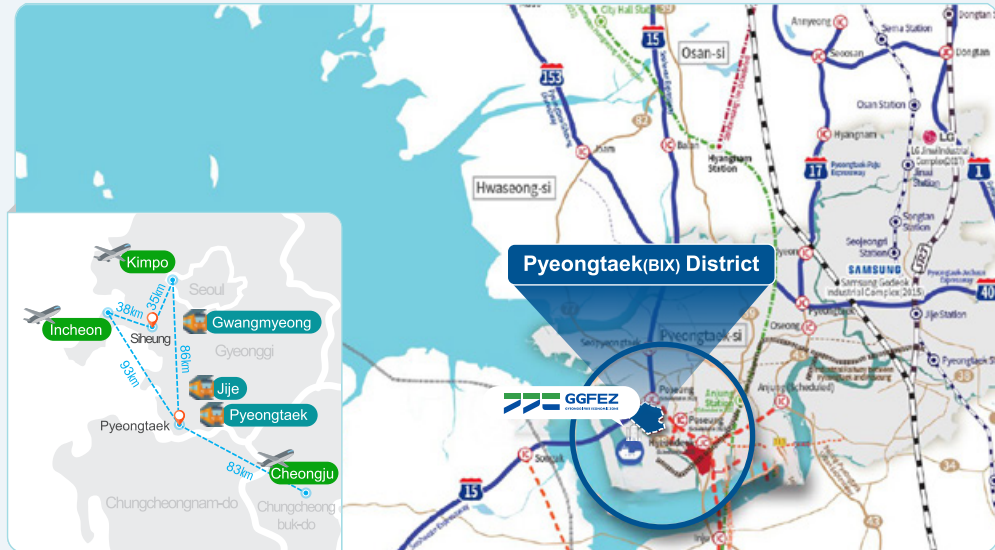
GH, PUC

- 16 -

16



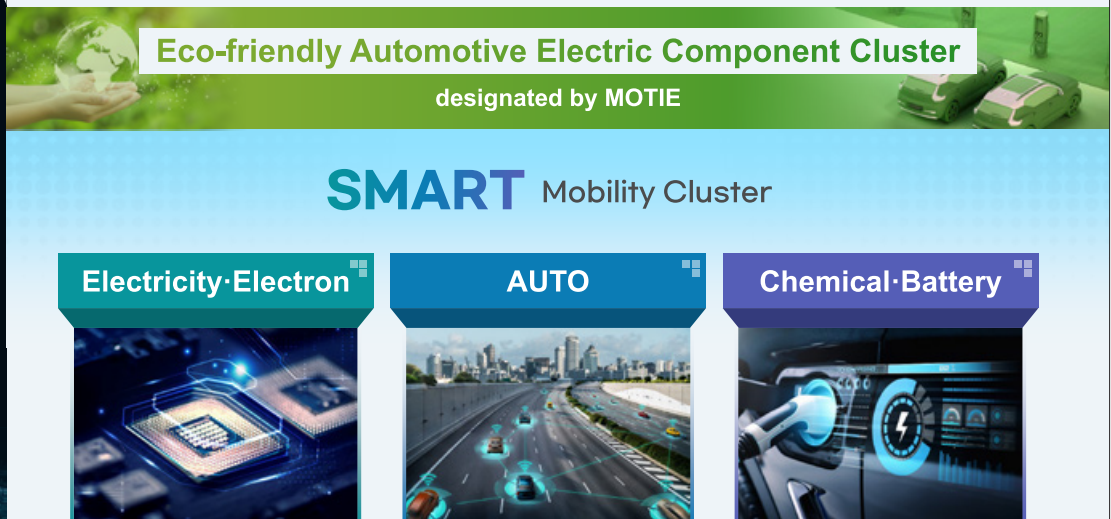
## 02. PyeongTaek BIX District - Traffic Network



- 17 -

17

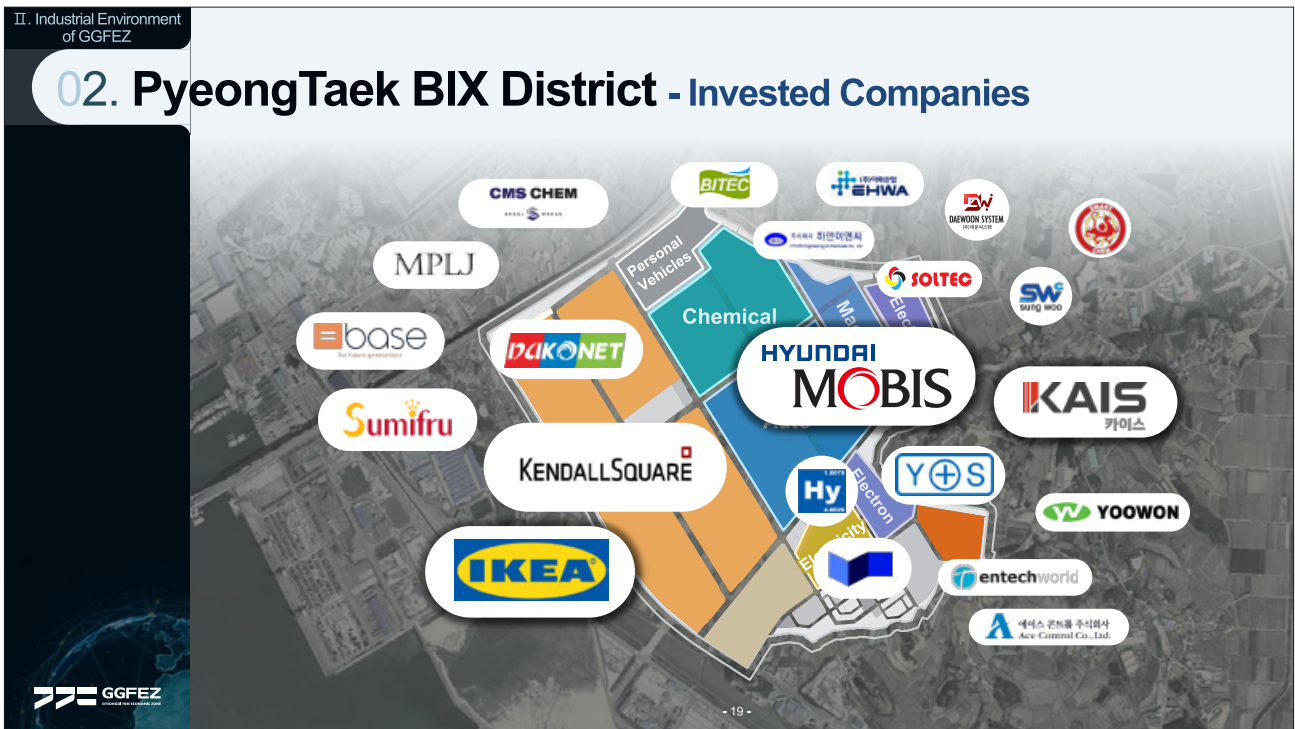
## 02. PyeongTaek BIX District - Industries



- 18 -

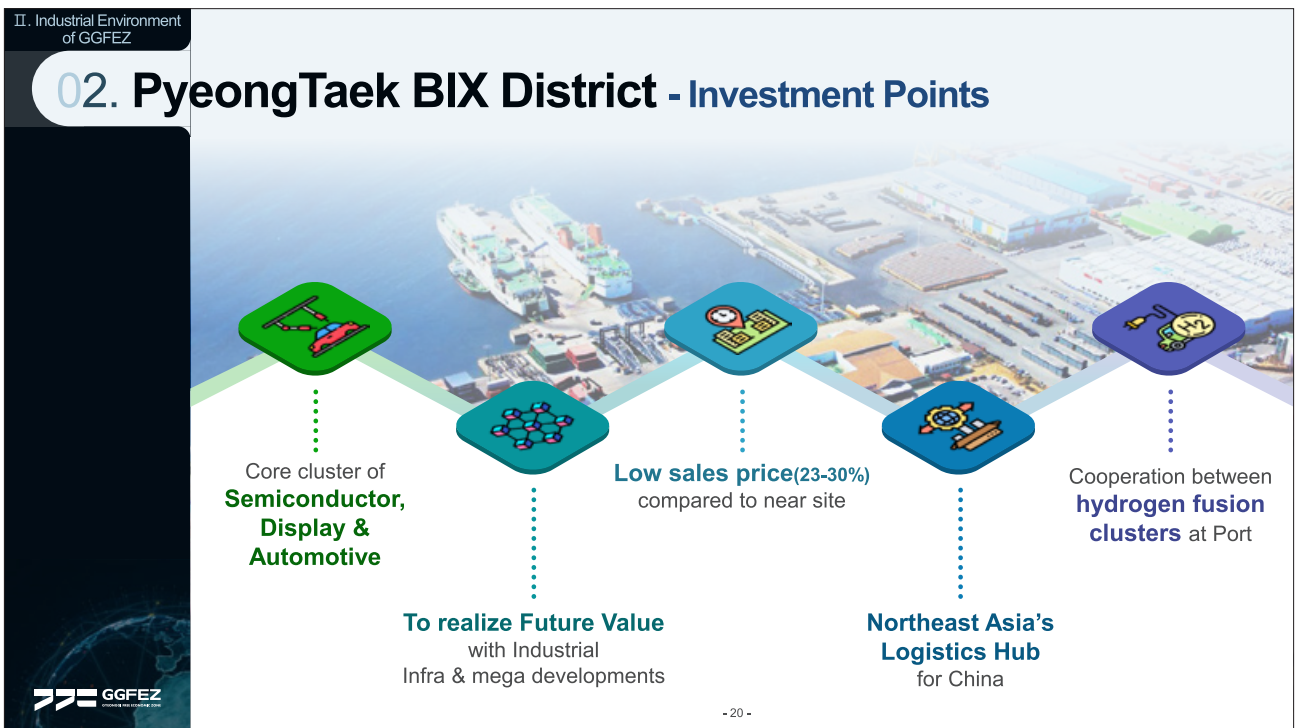
18

## 02. PyeongTaek BIX District - Invested Companies



19

## 02. PyeongTaek BIX District - Investment Points



20

### 03. Siheung BaeGohd District - Create unmanned vehicles complex & Medical Bio-Industrial complex



21

### 03. Siheung BaeGohd District - Establishment of Unmanned Vehicles Complex



22



### 03. Siheung BaeGohd District - Innovation Cluster for Medical, Bio, and Health

Creating a Cutting-Edge Future Hospital Using AI and Robotics(2027)

#### Step 1

Siheung BaeGohd  
Seoul National University Hospital

Land area	67,504m <sup>2</sup>
Total project cost	594.8billion (KRW)
Number of beds	800beds

#### Step 2

Brain Biohealth Complex

Land area	52,952m <sup>2</sup>
Major Contents	Development of Composite Infrastructure for Research, Education and Information
Main facilities	<ul style="list-style-type: none"> <li>Innovative Medicine Research Center</li> <li>Advanced Medical Education Center</li> <li>Data science center</li> </ul>

23

### 04. Pyeongtaek HyeonDeok District - Creating Hydrogen economy city & settlement environment

Pyeongtaek  
Hyeondeok  
district

#### Overview



Logistic



Housing



Commercial



Trip

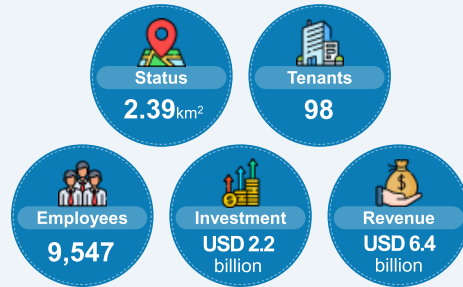
Location PyeongTaek city HyeonDeok

Size 2.32km<sup>2</sup>

Master developer GH + Private company

24

## 05. Foreign industrial Complexes



### Tenant Criteria

Industry	High-tech, new growth engine
Minimum Investment	\$1-1.5M/3,300m <sup>2</sup>
Eligibility	Min. 30% foreign investment
Lease Period	Max. 50 yrs.
Lease Fee	1% of construction cost



- 25 -

25

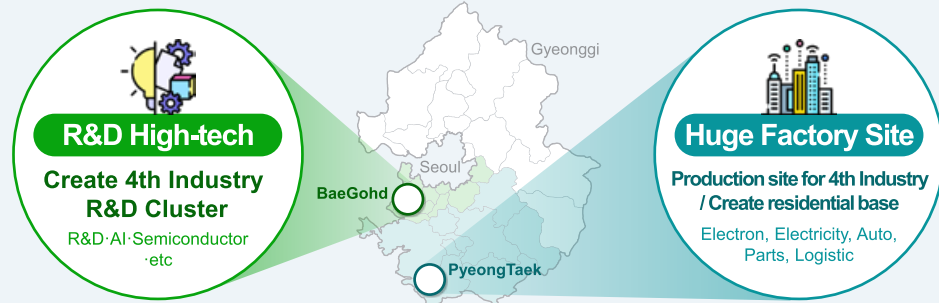
# III

## Investment Proposal & Incentive

26



## 01. Investment Proposal - Investment Environment



### Best Investment Points

#### Creating R&D cluster of New Global Industries

Seoul National University  
Siheung BaeGohd

#### Advanced Industrial cluster formation

Automobile, Semiconductor, Display

#### Convenient transportation network

Reduced logistics costs

#### Easy access to the consumer market

Located in the metropolitan area

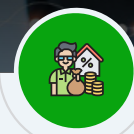
## 01. Investment Proposal - Investment Method

Lease

Siheung District, lease zone

Purchase

BIX, Hyeondeak District



New Investment

R&D (lease)

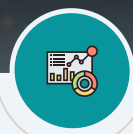


New Investment

Factory  
(lease/purchase)



Acquisition of Company



Acquisition of Company

Equity



Joint Investment

Collaborate Company



To cooperate in various industries AUTO, Semiconductor, advanced material & parts



Easy to hire qualified employee & link industry-academic associations

## 02. Incentive - Tax breaks



- 29 -

29

## 02. Incentive - Administrative Support



- 30 -

30

## 02. Investment Merit



31



32

Core of **West Coast!**  
Innovation Hub of future New Industry **GGFEZ**

**THANK YOU**

Ph.D/MBA

**Han, Sang Bong** Consultant



201 Marine Center 570-1 Manho-ri, Poseung-eup,  
Pyeongtaek city, Gyeonggi Province Korea  
Tel. +82-31-8008-8633  
E-mail. coolhan@korea.kr



---

## AMCHAM SUSTAINABILITY SEMINAR 2022

---

### ESG AND SUSTAINABILITY SOLUTIONS FOR THE BUSINESS 지속가능한 제품 생산을 위한 UL표준과 인증 서비스

---



#### **Carlos Correia** 카를로스 코레아

**VP & GM, Asset & Sustainability, UL**  
UL 사장

---

Carlos Correia is the Global Vice President & General Manager for Assets & Sustainability Performance at UL. He leads ESG driven business designed to solve some of the world's biggest challenges: renewable energy, ESG, sustainability, healthy buildings, health & well-being, and people safety.

Earlier, as VP & GM, Supply Chain & Sustainability software, he guided UL's evolution from traditional engineering to the digital SaaS economy, with the launch of software and data solutions focused on sustainability, supply-chain traceability, environmental-claims, and regulatory compliance.

Throughout his career, Carlos led large scale business transformations, leveraging his expertise in sustainability, digital technologies, and business innovation. He executed the acquisition and integration of over 30 companies, launched new products and transformed business models, while driving financial outcomes.

He's passionate about developing people and building multicultural teams, having launched various talent development initiatives. He serves on UL's Diversity, Equity & Inclusion (DE&I) Executive Council and is the executive sponsor of UL Latinos business resource group.

Carlos a Maritime Engineer, holds an MBA in International Management from United Business Institutes, affiliated with Mercer University. He also serves as an adjunct business management professor at DePaul University's Charles H. Kellstadt Graduate School of Business.

Fluent in English, Portuguese, French and Spanish, Carlos has lived all over the world. He currently lives in the Chicagoland area with his wife and giant Newfoundland dog, Kuma. Best known for his curiosity, friendliness and adventurous spirit, Carlos will travel anywhere, try any food, and befriend any person.



# Sustainability Summit

American Chamber of Commerce | June 2022

**ESG and Sustainability  
Solutions for the Business**



1

## Welcome



[carlos.correia@UL.com](mailto:carlos.correia@UL.com)

### Carlos Correia

Global Vice President & General Manager,  
UL

Leads ESG driven business designed to solve some of the world's biggest challenges: renewable energy, ESG, sustainability, healthy buildings, health & well-being, and people safety.

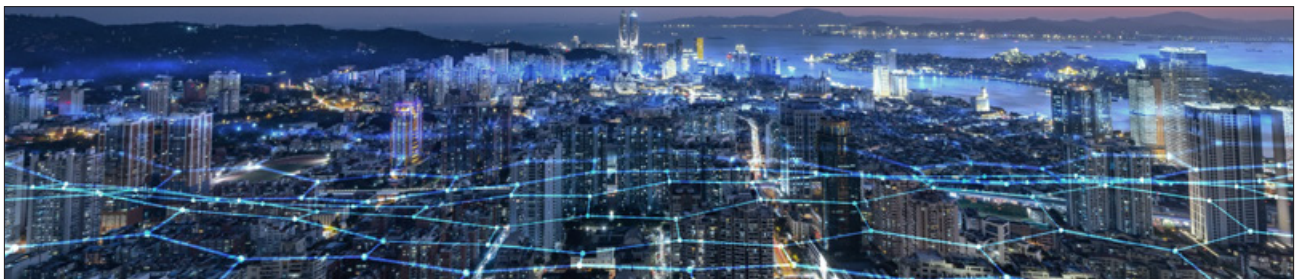
2



2



3



## UL is a global safety science leader

Our scientists, engineers, problem solvers and innovators partner with you to unlock potential.

We empower you to:



Demonstrate  
safety



Strengthen  
security



Enhance sustainability

4



4





## Did you know?

**100k+**

Suppliers

submitting sustainability data using UL 360 software.

**654**

Buildings

UL Verified indoor air quality for commercial real estate equating to >200 million square feet and rising.

**2 million.**

That is the number of global UL 360 users of corporate sustainability and supply chain software to report and manage ESG data.

Up to **70%** renewable energy forecasting of North America's grid operators.

**1,000+**

Sustainable product specifications

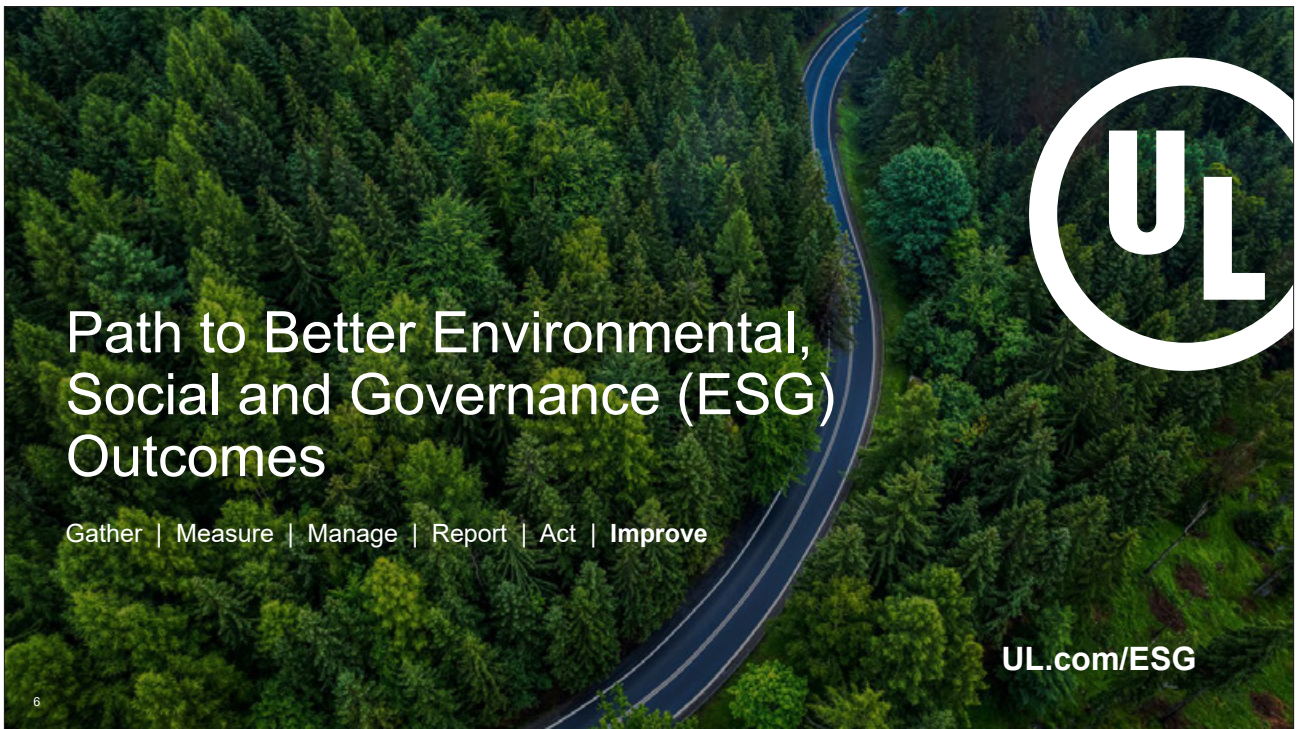
or purchasing guidelines around the globe.

Advised **90%**

of the wind industry's top project developers and plant owners.



5



## Path to Better Environmental, Social and Governance (ESG) Outcomes

Gather | Measure | Manage | Report | Act | Improve

[UL.com/ESG](https://www.ul.com/ESG)

6





## Takeaways

The demand for **ESG performance** is real.

Market drivers are pushing the need for **ESG transparency** because they represent tangible positive and negative **business impacts**



7

## ESG Transparency is becoming mandatory



U.S. Securities and Exchange Commission  
Proposed rulemaking for mandatory ESG  
Disclosure estimated to impact **12,000** companies



European Commission  
Proposed Corporate Sustainability Reporting  
Directive (CSRD) estimated to impact **49,000**  
companies



Reporting requirements around the globe  
(Canada, UK, Korea, Singapore... **140+** countries)



8

8

## Organizations around the globe are reporting business improvements from ESG initiatives\*

**52%**  
reported reduced waste and costs from improved operational efficiencies

**52%** reported enhanced corporate reputation and brand image

**49%**  
reported improved risk management and monitoring of long-term risks

  
**\$47 Trillion**  
invested in ESG R&D and innovation by 45 companies (WEF study)

**37%**  
Korea emission reduction goal to be achieved by 2030  
\*Ministry of Environment

### Company impacts

Nestlé has reduced water usage by

**41%**

and has increased production by

**73%**

with a **3%** reduction in energy consumption since 2000



**95%**

Recycled waste from manufacturing sites –  
\*Samsung Z1 report

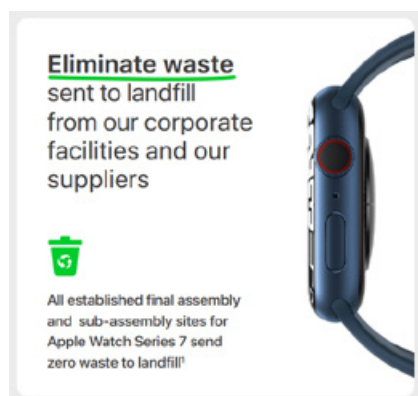
9

\* source: KPMG survey of business leaders



9

## Apple Zero Waste to Landfill



\*source: Apple Sustainability Report 2022

“Sending materials to landfill makes poor use of the world’s resources, while also contributing to global emissions. And the most vulnerable communities around the world are disproportionately exposed to the negative consequences of waste disposal.

Therefore, we’ve made waste free operations a priority.”\*

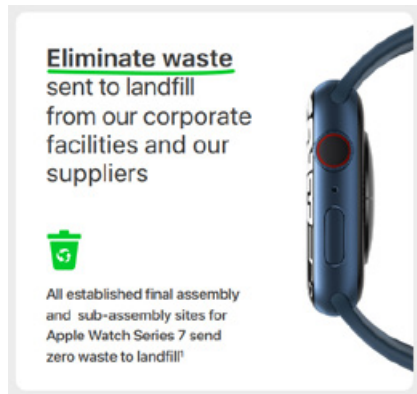
10

Environmental Progress Reports



10

## Apple Zero Waste to Landfill in Action



"In 2015, our campus in Cork, Ireland, became the first Apple facility to receive **UL's Zero Waste to Landfill certification**."<sup>\*</sup>

"In 2018, our suppliers achieved UL Zero Waste certification for all final assembly test and packaging facilities across iPhone, iPad, Mac, Apple Watch, AirPods, and HomePod."<sup>\*\*</sup>

**In 2021 Suppliers redirected 491,000 metric tonnes of waste to landfill in over 100 facilities**

**The journey continues...**

11

Environmental Progress Reports



11

## Amazon Web Services

**Commitment to reach the Paris Agreement  
10 years early and be net-zero carbon by 2040.**

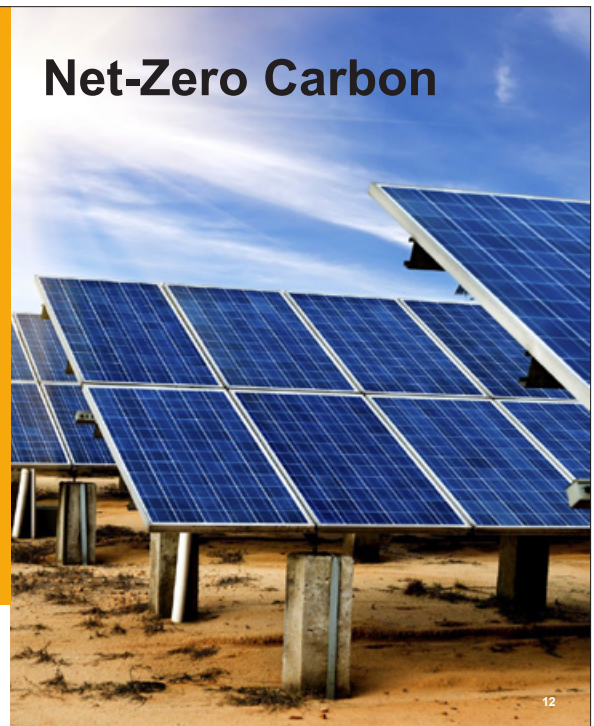
In 2020, Amazon became the world's largest corporate purchaser of renewable energy, reaching 65% renewable energy across their businesses.

Scaling up the use of renewable energy is central to Amazon's strategy to decarbonize their operations.

Clean energy sources, such as wind and solar, lessen Amazon's reliance on fossil fuels to power their operations and the services they provide to customers.



## Net-Zero Carbon



12

12



## Renewable energy can bring savings up to 75% versus traditional fossil fuels.\*

Securing renewable energy from projects that are in the planning stage or in early development allows to secure carbon-free energy closer to the sources of consumption and **negotiate favorable energy rates**.

At the same time, making decisions of buying renewable energy from prospective projects brings risks.

UL's team has deep expertise in all types of renewable energy technologies, estimating energy production, evaluating financial scenarios, mitigating risks and helping ensure projects are technically sound

\*source: Sunpower, US Department of Energy, & Office of Energy Efficiency & Renewable Energy (EERE)



13

13

## Volvo value chain impact

Volvo Group's sustainability disclosures are prepared to **provide greater transparency** of their economic, environmental and social impact and progress towards goals, extending into their supply chain (Scope 3).



\*source: Volvo Group Sustainability Report 2021



14

14

## Volvo value chain impact in action

Volvo Cars expects to generate **annual cost savings of \$102M USD\*** by adopting circular economic principles like remanufacturing, recycling and reuse.

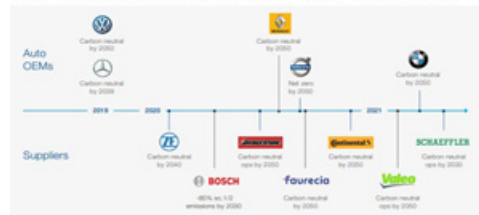
Organizations need to quantify all their emissions including scope 3 throughout their value chain. Limited data and visibility often make this a big challenge, but successful companies find ways to establish transparency about emissions.

UL assists in the data needs to drive Science Based Targets and develop scope 3 data collection and validation methodologies through UL 360 software.

15 \*source: Volvo Group Sustainability Report 2021



European automotive industry suppliers set targets following OEMs' Scope 3 pledges\*

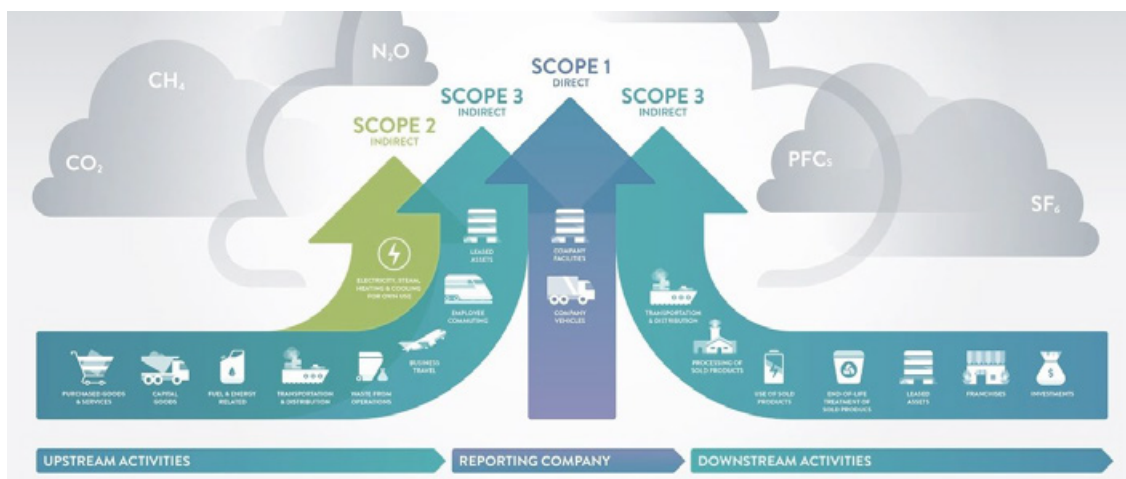


Graphic source: World Economic Forum – Winning the race to Net Zero



15

## Your company's ESG impact... ...contributes to another company's ESG performance



source: Greenhouse Gas Protocol

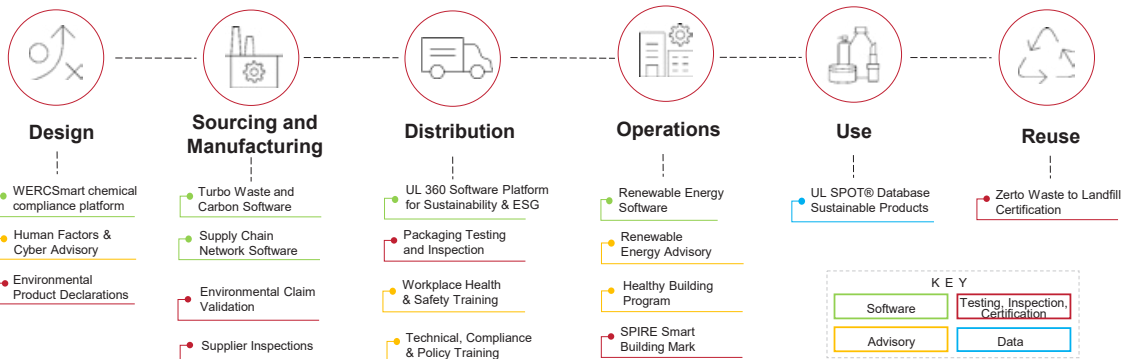
16



16

# UL supports all stages of your ESG journey

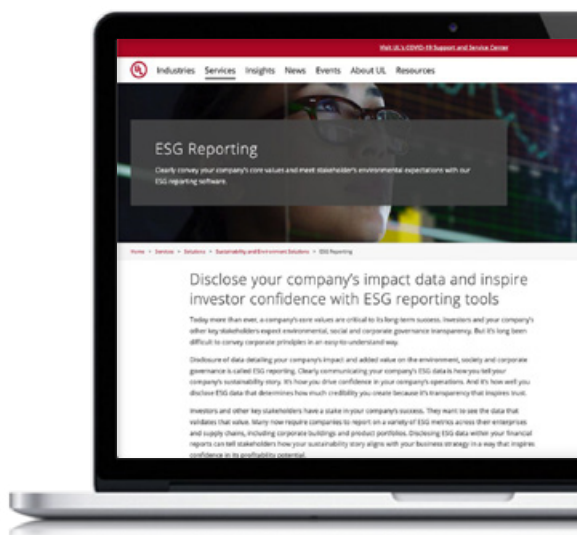
ESG Advisory ESG Software Data Management Renewable Energy Product Sustainability



17



17



18

Partner with UL,  
a global safety science  
leader, for measurable and  
actionable ESG performance  
and reporting.

Visit [UL.com/ESG](https://www.ul.com/ESG)

Thank you.



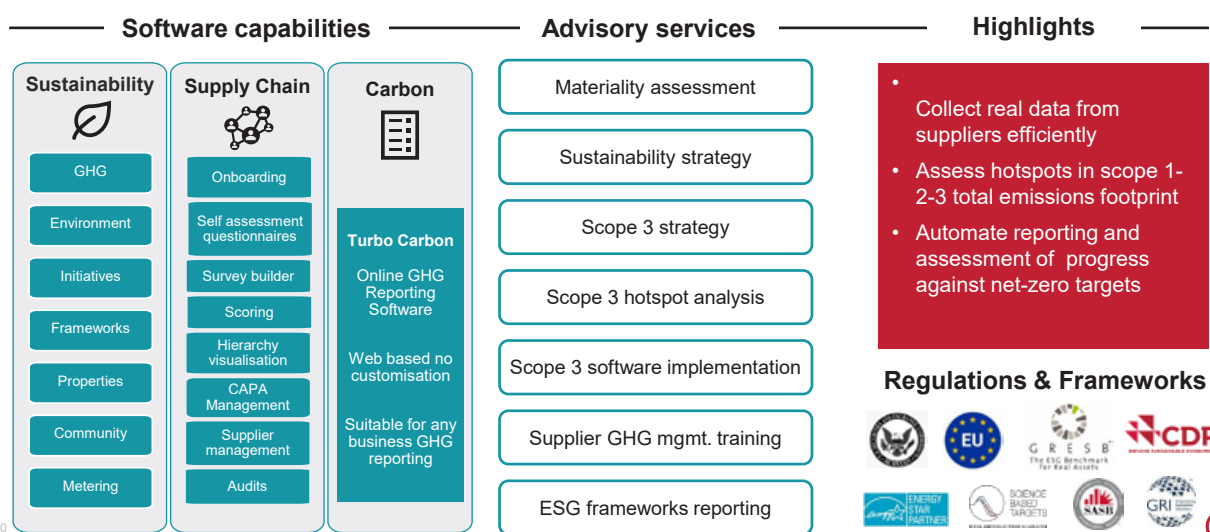
18





19

## Easily report GHG and plan beyond current net-zero commitments



20

## UL 360 ESG and sustainability software



21

- Experts in sustainability and software
- 20+ years of global market experience across all industries
- Strong data integrity and validation
- Powerful inbuilt calculation engine and global emission factor database
- Reporting standards, frameworks, regulations and data feeds updated regularly
- API to and from major data sources, e.g. Responsible Business Alliance (RBA)
- Industry expertise, e.g. GHG Verification, Supply Chain (Scope 3), Buildings
- **Used by 15,000 organizations and 100,000 suppliers**

21

## ESG Reporting Packaging Industry

GPA Global Luxury Packaging scales up ESG advisory and software solutions with UL

[Watch the video interview](#)

22

### CASE STUDY

**Goal: measure the carbon footprint of manufacturing sites and reduce emissions.**

- **2021** Scaled up to 360 Sustainability Essentials Software for ESG reporting and full advisory services.
- **2019**- Expanded the carbon footprint program to include 10 manufacturing sites across Greater China.
- **2018** - Turbo Carbon software for collecting and reporting carbon data across manufacturing

*"It's hard to get people engaged with sustainability, but now we can confidently report our data."*

*Using the advisory services and software gave us a framework which is more manageable."*

Nick Hurd, Chief Sustainability Officer, GPA Global

UL and the UL logo are trademarks of UL LLC © 2022.



22



## We are a trusted ESG partner

Highly ranked **ESG** reporting software

Winner for **Top Product Award** with Essentials ESG aligned software

UL Named a **“Top Training Company”** Employee Health, Safety and Wellness Training Company by Training Industry 2021

Amazon Green Product Climate Pledge Friendly – **ECOLOGO® Certification**

UL and the UL logo are trademarks of UL LLC © 2022. Proprietary & Confidential.



23



## Our science-based solutions address a broad range of areas and themes



Sustainable Assets



Corporate Sustainability



Renewable Energy



Supply Chain



Health and Safety



Product Safety and Sustainability

UL and the UL logo are trademarks of UL LLC © 2022. Proprietary & Confidential.



24





Request a demonstration  
of UL's 360 sustainability software



[UL.com/360](https://UL.com/360)

25

---

# AMCHAM SUSTAINABILITY SEMINAR 2022

---

## ACHIEVING SUSTAINABLE DEVELOPMENT GOALS WITH ESGS ESG와 지속가능성 달성을 위한 교보생명 사람중심 이해관계자 경영

---



### Kumjoo Huh 허금주

**EVP, Head of New Growth Engines and Govt' Relations,  
Kyobo Life Insurance**  
교보생명보험 전무

---

Kumjoo Huh is an executive with 30+ experience, focused in the areas of Corporate Strategy, Digital Transformation, B2B sales and marketing and Communications. Currently hold the position of EVP at Kyobo Life, one of the major financial institutions in Korea, responsible for formulating and executing mergers and acquisitions, establishing strategic alliances, creating digital ecosystems for partnerships, setting up and running in-house ventures, conducting government relations, CSR and public relations.

#### Core Competencies:

- Clear Vision for the Team
- Open Communication Based on Coaching Certification
- Proactive Adaptability
- Collaboration to Engage All Stakeholders
- Proven Track Record of High Performance

#### Career Experience:

- EVP\_Head of New Growth Engines and Govt' Relations
- Kyobo Life 2019~

- Built deal pipeline for M&A to create digital ecosystem and currently conducting Due Diligence on a non-life company.
- Collaborate with Venture Capitals(VC) and Private Equity to source and invest in high growth potential startups.
- Invested in 3 VCs as Limited Partner (US\$ 15 million) and will become General Partner for Soft Bank Fund in Singapore.
- Established strategic alliance with platform companies to create synergies in business models. This year, signed MOU with KakaoBank.
- Set up the first in-house venture program for employees backed up by governmental fund (US\$530,00).
- Currently incubating 10 teams with an Accelerator and UIUX designers.
- Formulated Strategy to enter South East Asian market and currently in discussions with potential partners (Balong and BIDV) in Vietnam.
- Run corporate culture transformation program which includes promoting digital literacy, reverse mentoring, and building an agile culture. Was featured in primetime TV news for the reverse mentoring program.
- Monitor and report on policies and regulations, and work in coalition with interest groups for strategical approach.



## Kyobo Life's Human-centered Stakeholder Relationship Management for ESG and Sustainability

Prepared by Kyobo Life Insurance  
For Amcham Korea

June 9th, 2022



1

## Davos Manifestos

### Statement on the Purpose of a Corporation

We commit to:

- Delivering value to our customers
- Investing in our employees
- Dealing Fairly and ethically with our suppliers
- Supporting the communities in which we work
- Generating long-term value for shareholders.

Each of our stakeholders is essential.

We commit to deliver value to all of them.

- August 29, 2019 -

The Universal "Purpose of a Company" in the  
4th Industrial Revolution...

Is to engage all its s stakeholders in shared and  
sustained value creation...



2



BlackRock CEO

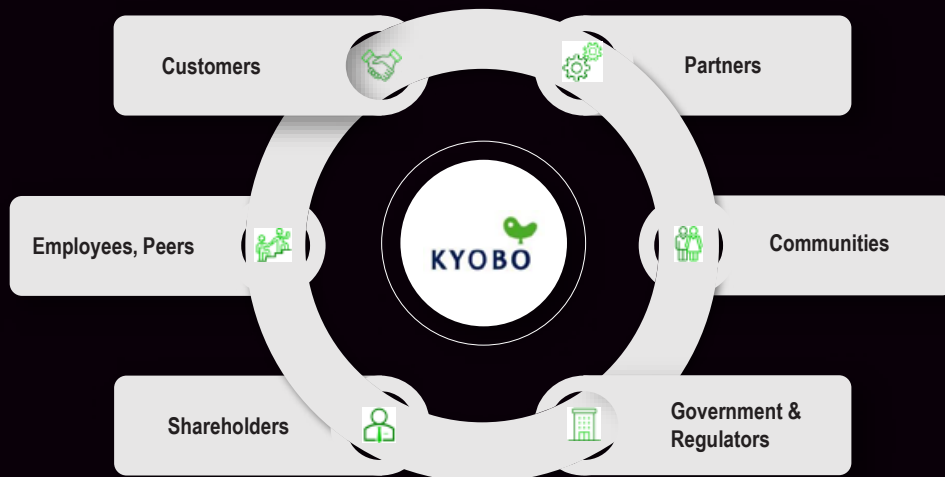
Larry Fink's letter:

"Sustainability and Deeper Connections to Stakeholders Drives Better Returns"



3

Kyobo Life's Human-Centered SRM \_ Win Win Win Relationship for Sustainability

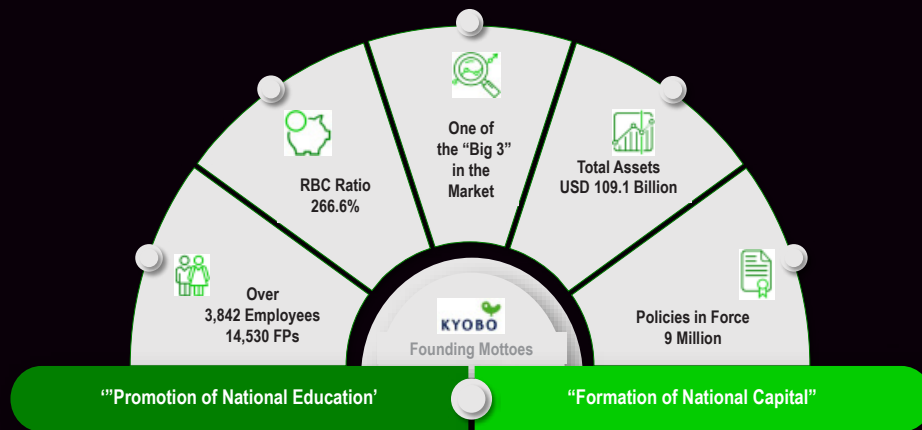


\*Dr. Chang-Jae Shin's UN Speech, 2018

4

## Kyobo Life at a Glance \_ Introduction

KYOBOLife, based on the founding mottoes of 'Promotion of National Education' and 'Formation of National Capital', was founded in 1958 and has been recognized as one of the 3 "BIG" life insurance companies in Korea. Kyobo Life is a financially sound company with total assets amounting to USD 109.1 billion as of December, 2021



\* As of Dec 31<sup>st</sup> 2020

5

## Kyobo Life at a Glance \_ Vision 2025

KYOBOLife launched its Vision 2025 and has been constantly striving to achieve the Vision by establishing management directions and core tasks every year and actively implementing them based on the Core Values



6

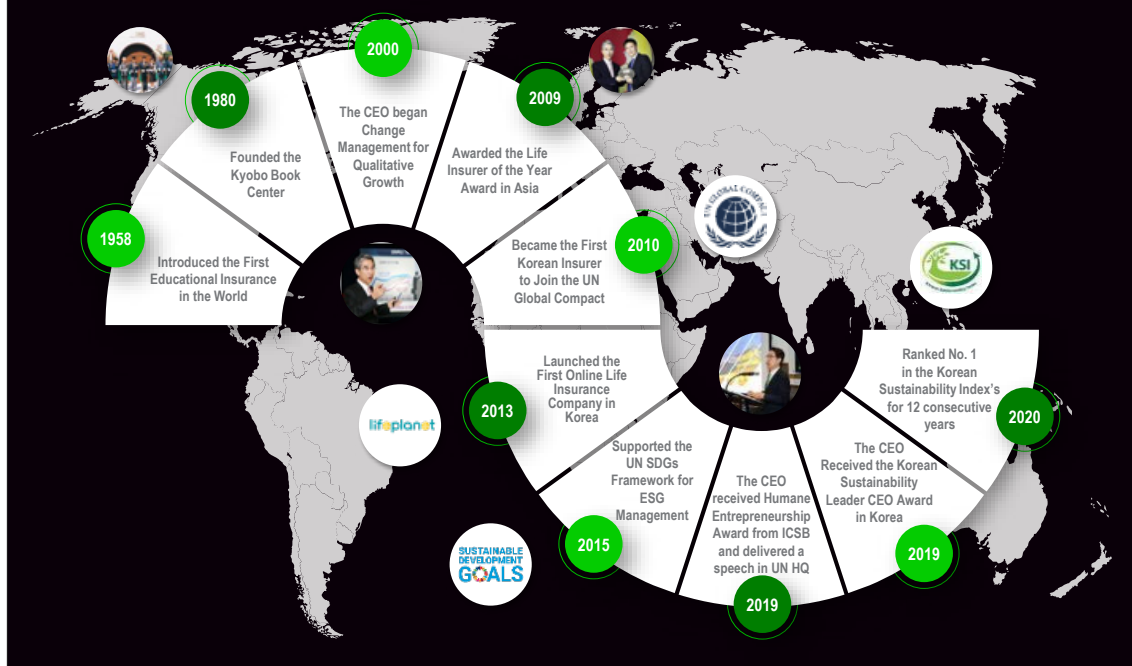
## Kyobo Group at a Glance

The Kyobo group consists of Life Insurance, Securities, Investment Management, IT Services, Real Estate and businesses that supports the function of financial services, and Korea's signature online/offline Book Center

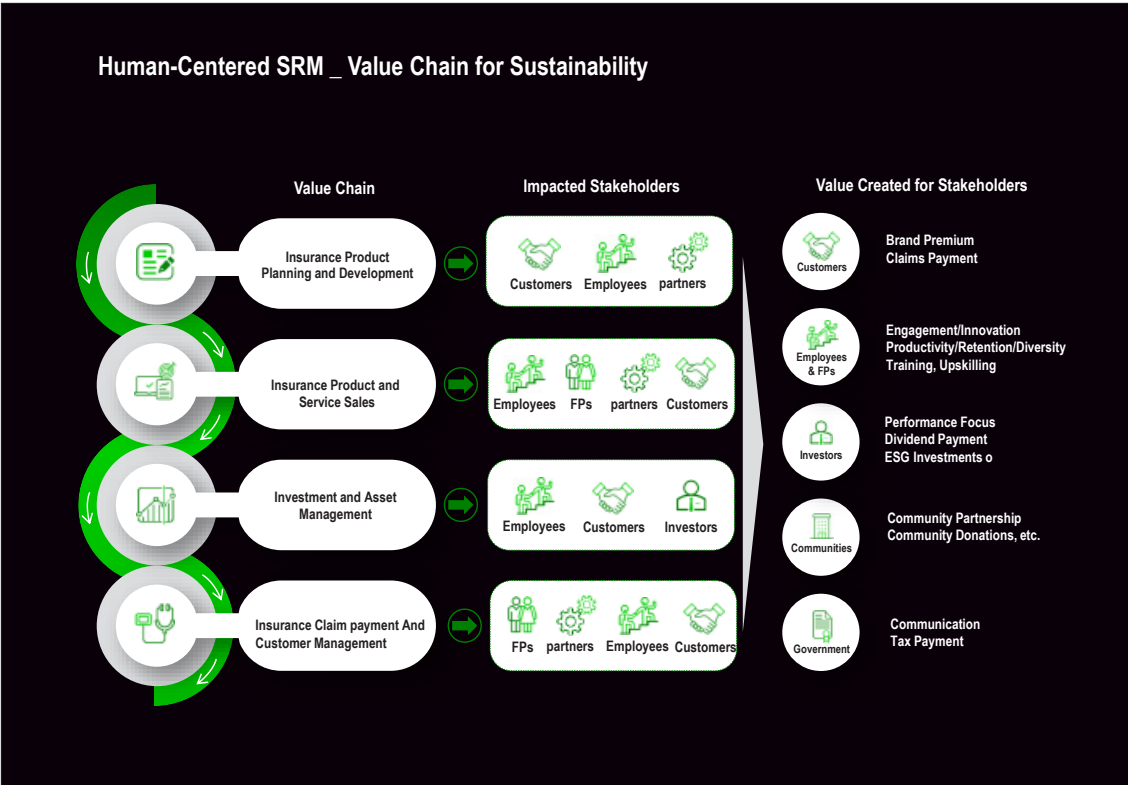


7

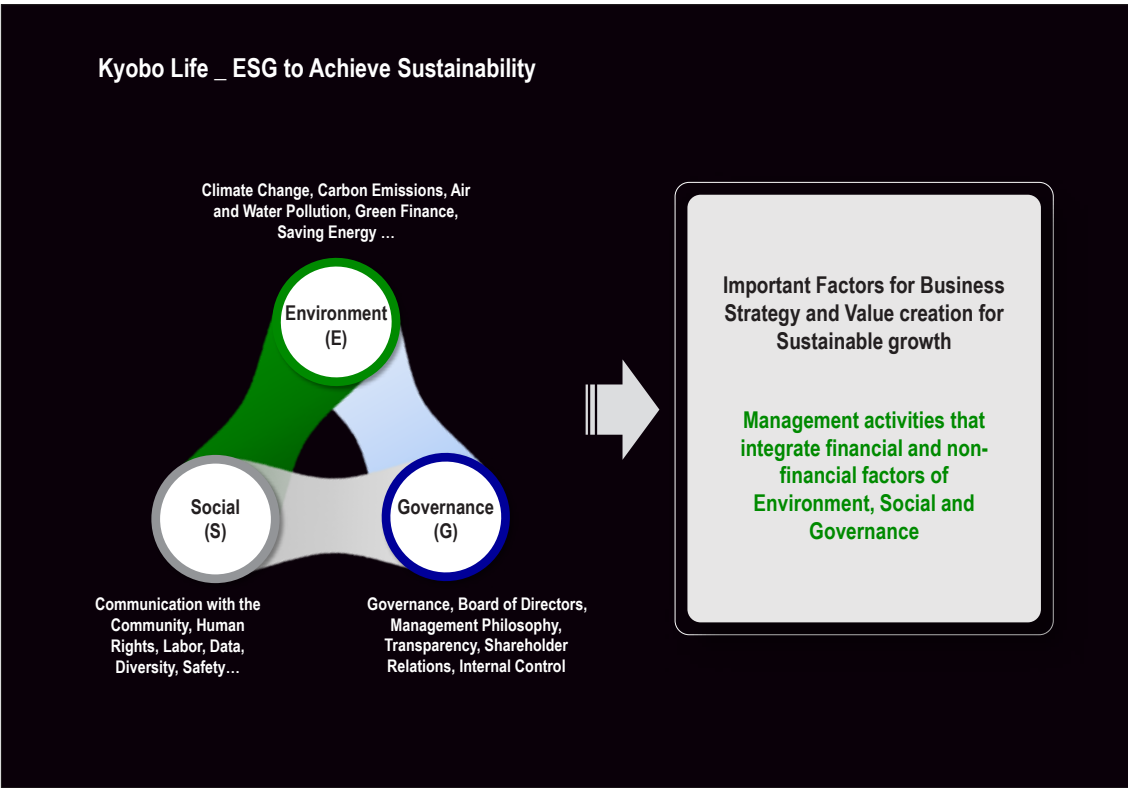
## Kyobo Life at a Glance \_ Milestones of the Journey to Achieve Sustainability Since 1958



8



9

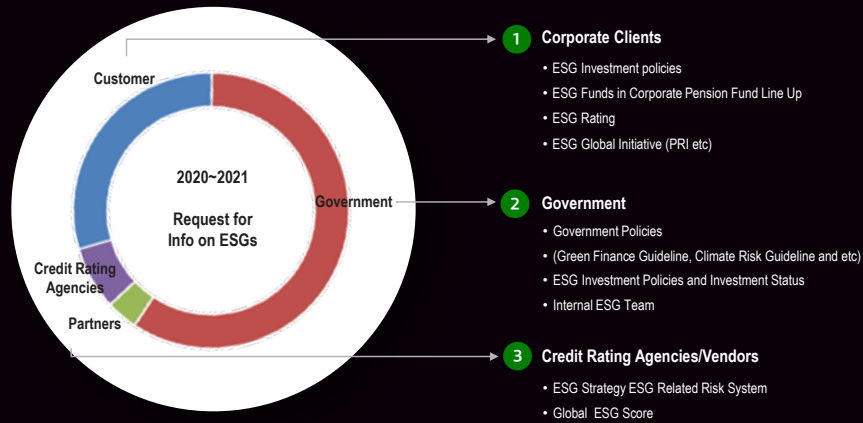


10



## Stakeholders' Request for Information on ESG

Since 2020, Stakeholders have been requesting ESG related investment policies and company initiatives

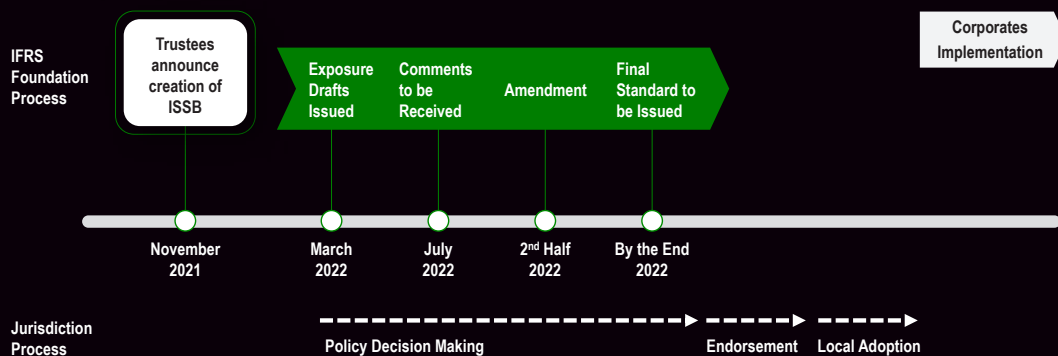


11

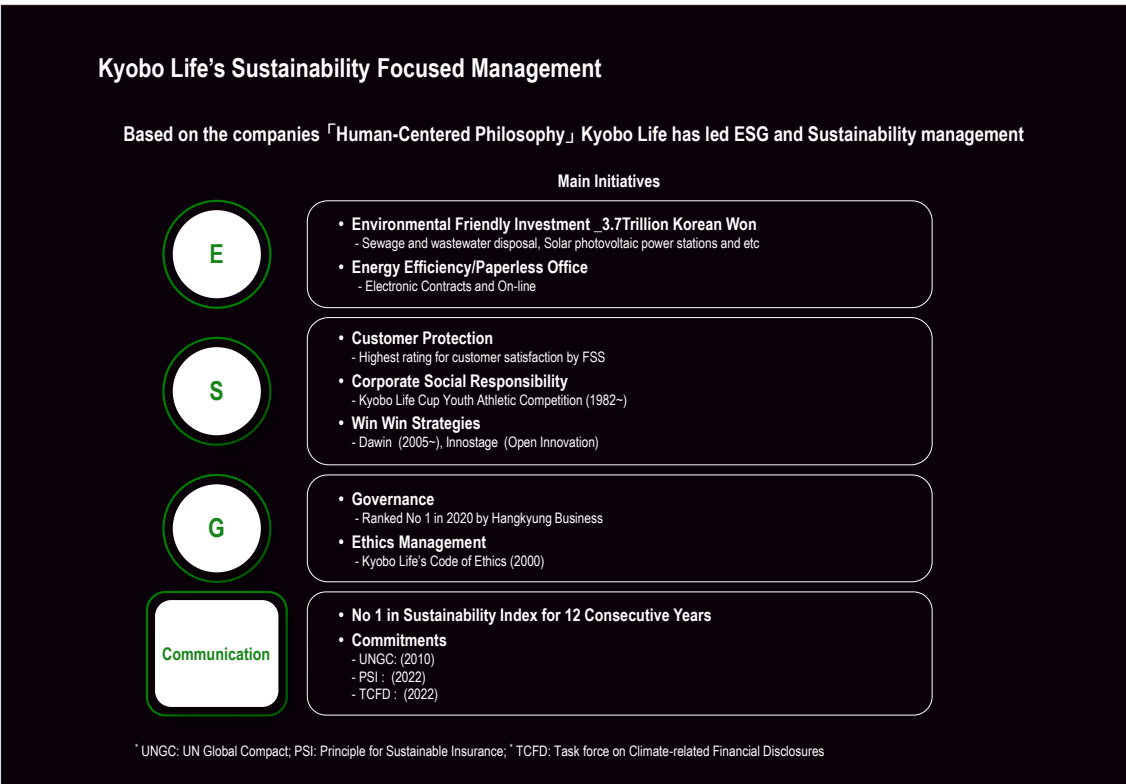
## Global ESG Initiatives to Create Sustainability

On 3 November 2021, the IFRS Foundation Trustees announced the creation of a new standard-setting board - the International Sustainability Standards Board (ISSB) to help meet the increasing demand from investors for high quality, transparent, reliable and comparable reporting by companies on environmental, social and governance (ESG) matters

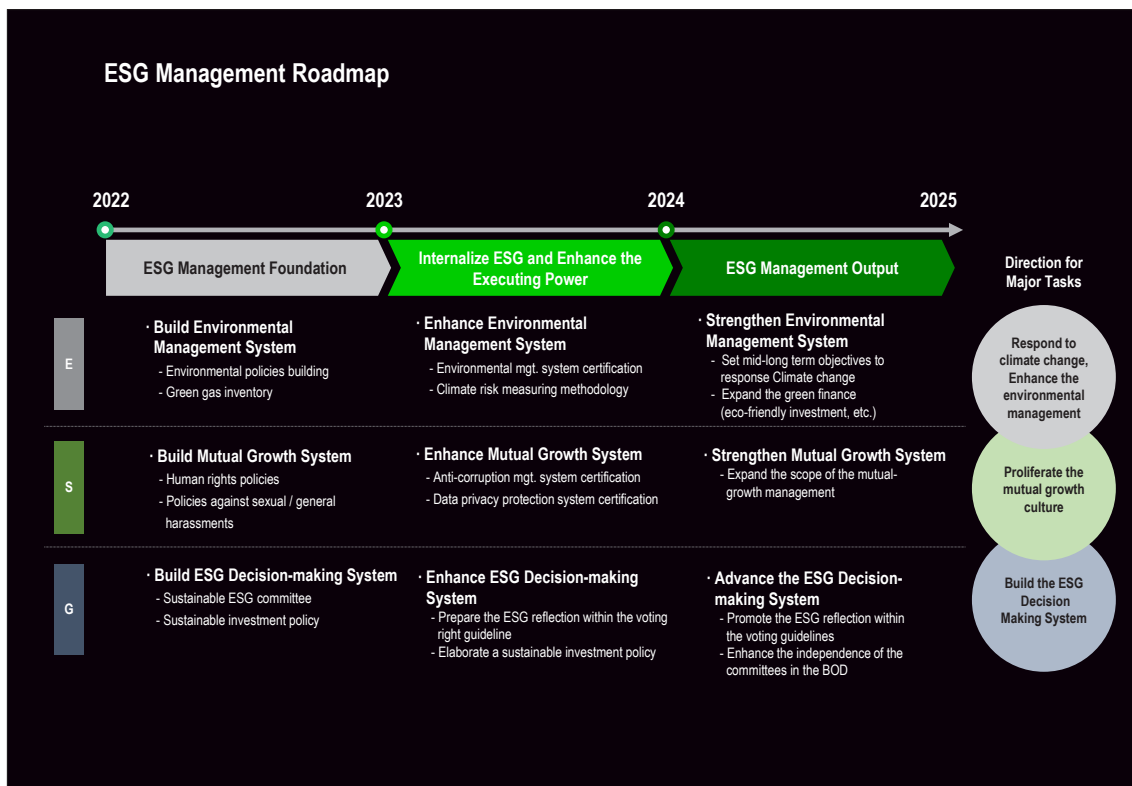
### Steps for Adoption



12



13



14

## Embedding ESG into the Culture \_Environmental Campaigns

Kyobo Life strives to preserve and improve the environment in which our future generations will live by considering the characteristics of its business, such as creating a paperless office environment, launching Eco Together campaign to cultivate employees' environmental friendly habits, and joining the Carbon Disclosure Project (CDP) Signatory

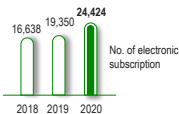
### Eco-friendly Workplace

- Electronic Subscription System
- e-document and digital record
- Reinforcement of Waste Management
- Reducing Electricity Usage



13,438,000

papers saved annually  
due to the conversion  
into electronic media



### Eco Together Campaign

Eco Together campaign for employees creates environmental friendly habits for earth and at the same time encourages employees to come up with creativity to win various rewards and awards which contributes to INNOVATION



15

## Embedding ESGs into the Culture \_D&I

Kyobo accepts and respects the difference of employees to encourage innovation. Kyobo currently has two "emerging" groups, and provide mentoring programs to help them adapt and grow quickly within the organization without any discrimination

KWICK Kyobo Women's Innovative Council



Kyobo Women's Conference



D&I



KING Kyobo's Innovative Next Generation



KWIN X G20 D&I Virtual Conference

16

## Embedding ESGs into the Culture\_ Solving Social Problems Communities and Government

The company strives to be a responsible member of the society and has carried a consistent cause to return and share with the society by founding 3 non-profit charity foundations focusing on education, culture and social welfare, and implementing various forms of ESG oriented activities including volunteer works, scholarships, donations and direct investment

Various Healthy Live Promotion Programs



Scholarship & Education Programs



Dasomi Volunteer Works



Eco-friendly Social Contribution



BTS Song Lyrics Featured on Kyobo's Iconic Billboard



Open Innovation



Shin Research Excellence Award



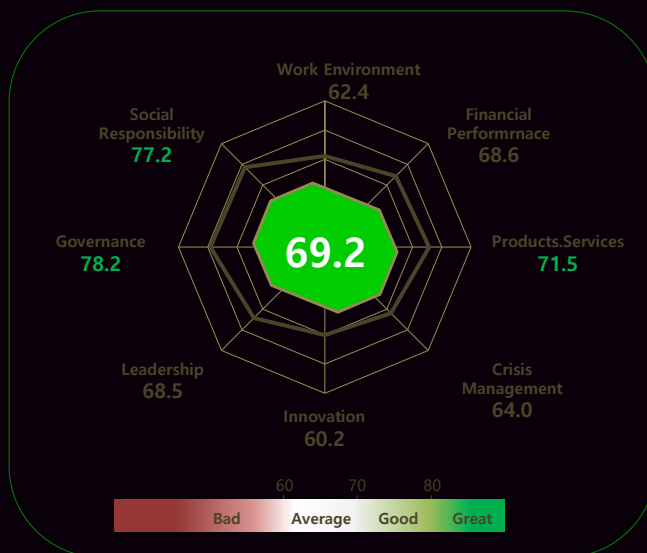
Resolution of Social Issues



17

## Embedding ESGs into the Culture\_

Kyobo Life conducted employee survey on January, 2021 to measure the level of Employee Engagement  
Results illustrated high score in areas of corporate governance and social responsibility



In an employee survey conducted by CEO Score to 500+ Kyobo Life employees,  
-Governance  
-Social Responsibility  
-Product and services  
Recorded the highest score reflecting the ESG and Sustainability mindset

18



## Human-Centered SRM \_ Humanism Embedded in Corporate Culture

Kyobo Life inherited a culture of “humanism” fostered under Founder Yong-Ho Shin under the firm belief that when employees are respected, they can unleash their potentials

Founder Cultivated Employees to be

- Honest and Sincere
- Self-Developing
- Cooperating with Colleagues and Contributing to the Society



\* Source: Dr. Chang-Jae Shin at International Council for Small Business, May 10, 2018

19

## Human-Centered SRM \_ Humanism Embedded in Corporate Culture

Kyobo Life's Chairman and CEO philosophy of Human-Centered based on his background as a former Infertility doctor and practitioner emphasizes the preciousness of human life



20

## Human-Centered SRM \_ Communication

In Human-Centered Stakeholder Relationship Management, Communication is the most fundamental. The CEO and the Management Team make efforts to listen to the employees with an open mind respect and be considerate of the employees' perspectives



21

## Human-Centered SRM \_ Empathy

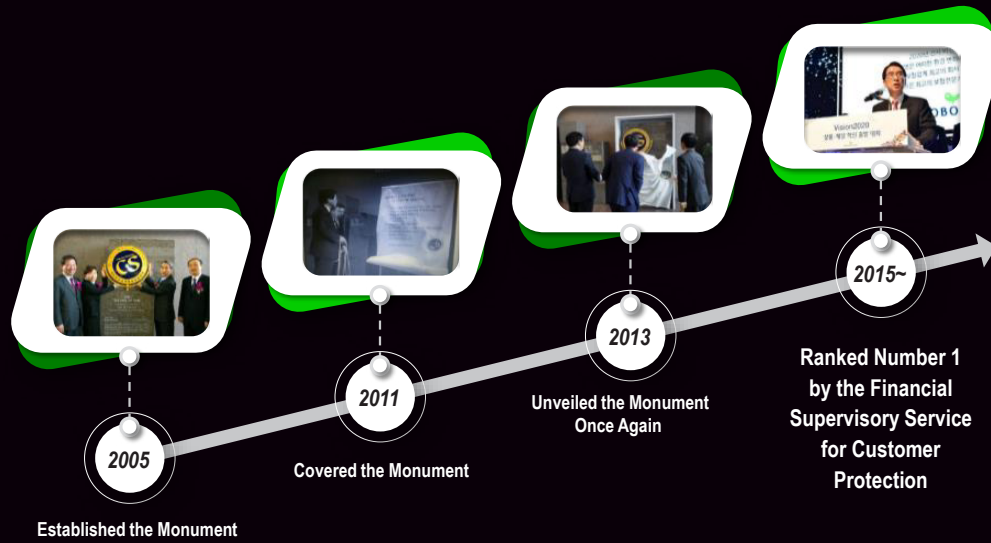
The Company's CEO makes efforts to create emotional connectivity to empathize with employees...  
To empathize with employees, the CEO takes an emotional approach rather than a rational conversation



22

## Human-Centered SRM \_ Improved Customer Satisfaction

KYOB0 is on a continuous journey to respond to customer needs. It is the first insurance company to be inducted into the Customer Satisfaction Hall of Fame but had to reflect upon themselves to gain back its reputation



23

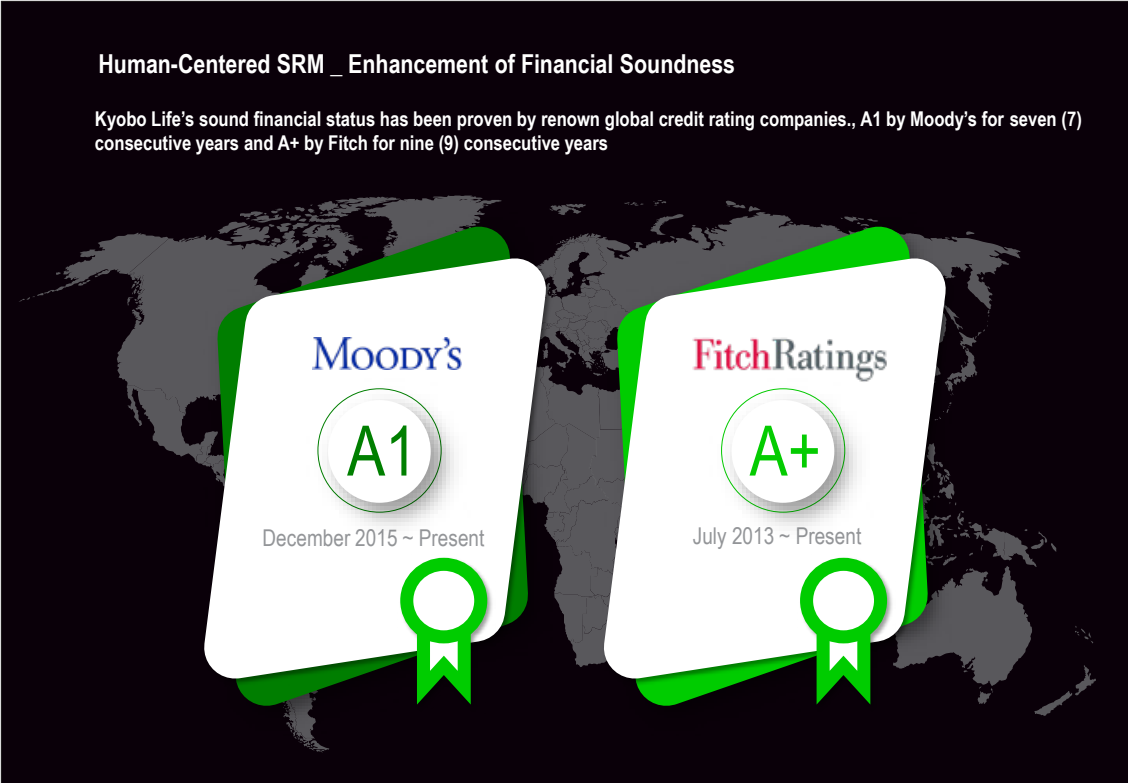
## Human-Centered SRM \_ Key Financial Performance & Stability

The company's revenue and assets grew with steady net income. Its ROE remains higher than the peers in the same range

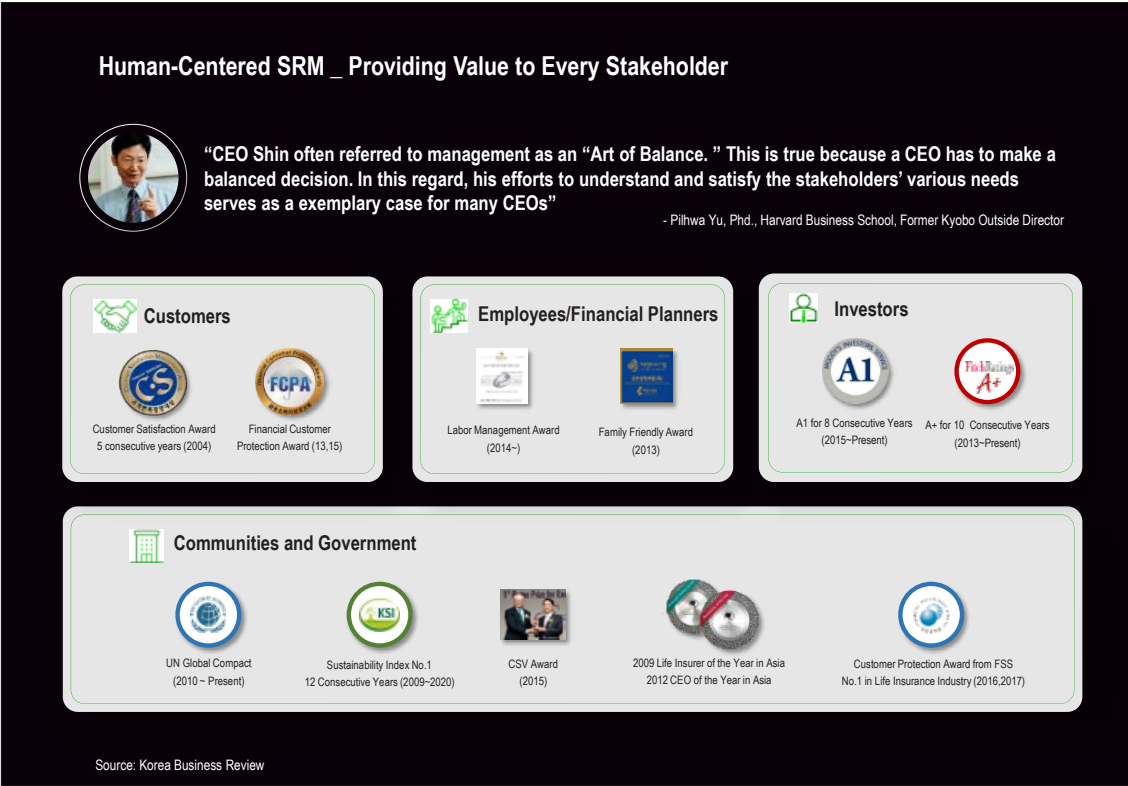


\* As of Dec 31st 2021, USD 1 = KRW 1,200

24



25



26



## Dr. Chang-Jae Shin UN Speech:

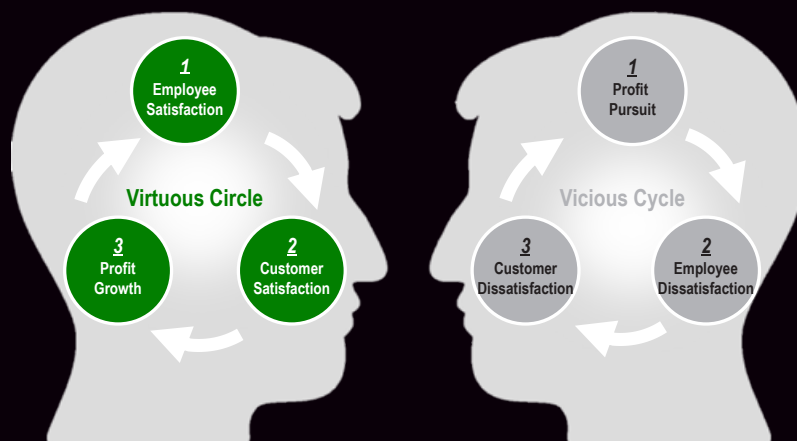
“Stakeholders are interdependent on each other and their commitment toward the company emerges as the most important factor for the company’s sustainability.”



27

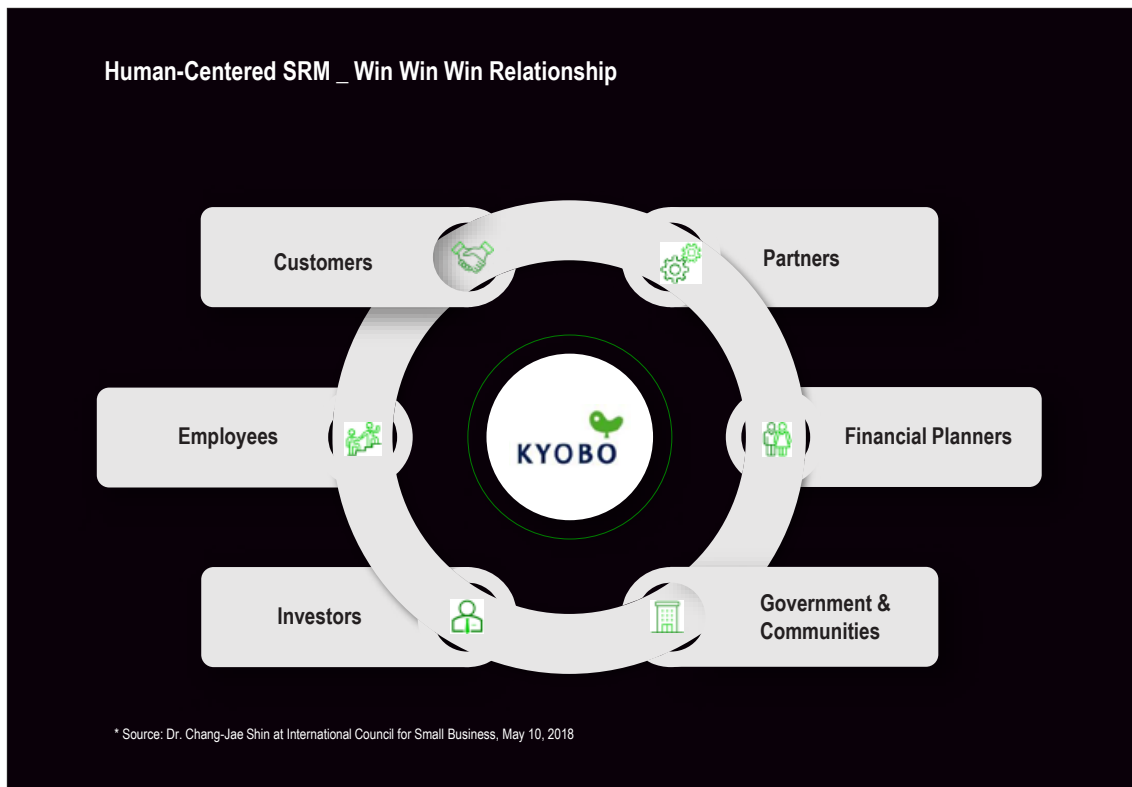
## Human-Centered SRM \_ Seeking the Virtuous Cycle

What would you follow first ?



\*Source: Dr. Chang-Jae Shin  
At International Council for Small Business, May 10, 2018

28



29



30

---

## AMCHAM SUSTAINABILITY SEMINAR 2022

---

### ESG'S LEGAL IMPLICATIONS & BUSINESSES' RESPONSE STRATEGIES ESG의 법적 쟁점과 기업의 대응전략

---



#### **June Yong Lee** 이준용

**Foreign Attorney, Kim & Chang**

김·장 법률사무소 외국변호사

---

June Lee is a U.S. licensed attorney in the EHS Practice and the Anti-Corruption & Corporate Compliance Practice at Kim & Chang. Mr. Lee's practice includes regulatory counseling, internal investigation, criminal defense, litigation/arbitration, and transactional matters, with special focus on complex questions about the environmental & energy laws in Korea and the use of scientific information in law. As a keen birder, he studied behavioral ecology of black-billed magpie at Seoul National University (M.S.) and phylogenetics of Australian fairywrens at Harvard University (Ph.D) before his law practice.

June 9, 2022

# ESG's Legal Implications & Businesses' Response Strategies

June Lee

1

## ESG Policy in Korea

KIM &amp; CHANG

### Expand governance report obligation

- Gradually expand corporates subject to 'corporate governance report' disclosure

Effective year	2019	2022	2024	2026
Total assets (KRW)	2tn +	1tn +	500bn+	All KOSPI listed

### Stimulate ESG disclosure

- Stimulate corporates' voluntary disclosure through Korea Exchange (KRX) and gradually transition to mandatory disclosure

Phase 1 (~ '25)	'ESG Disclosure Guidance' (KRX, '21. 1. 18. )
Phase 2 ('25~'30)	Certain asset sizes <b>required</b>
Phase 3 '30년~)	All KOSPI listed <b>required</b>

#### ESG Disclosure Guidance

- General principles of ESG disclosure
- Disclosure best practice specific to industry
- Best practices for materiality assessment, stakeholder communication, etc.
- Global disclosure standards (GIR, etc.), disclosure procedure and method
- Board of Directors' role in ESG management

Source: Financial Services Commission, "Comprehensive Improvement Plan for Corporate Disclosure System," 2021. 1. 14

2

2



## [MOJ] Push for Mandatory Human Rights Management

KIM & CHANG



### What is Human Rights Management?

- Management activities to establish a culture of respect for human rights and form a **human rights-oriented decision-making system** in order to prevent companies from causing or being involved in human rights violations and to provide ex-post-facto remedies to victims of human rights violations



### (Proposed) Standard Guidelines for Human Rights Management of Companies

- The (Proposed) Standard Guidelines for Human Rights Management of Companies was prepared in May 2019, and public hearings were completed in several occasions.
- The core of "human rights management" is to provide **human rights due diligence** and **appropriate remedies if a problem occurs**.
- The final guidelines, which were to be distributed to major listed companies in the first half of 2020, but have not yet been distributed.



### Framework Act on Human Rights Policy

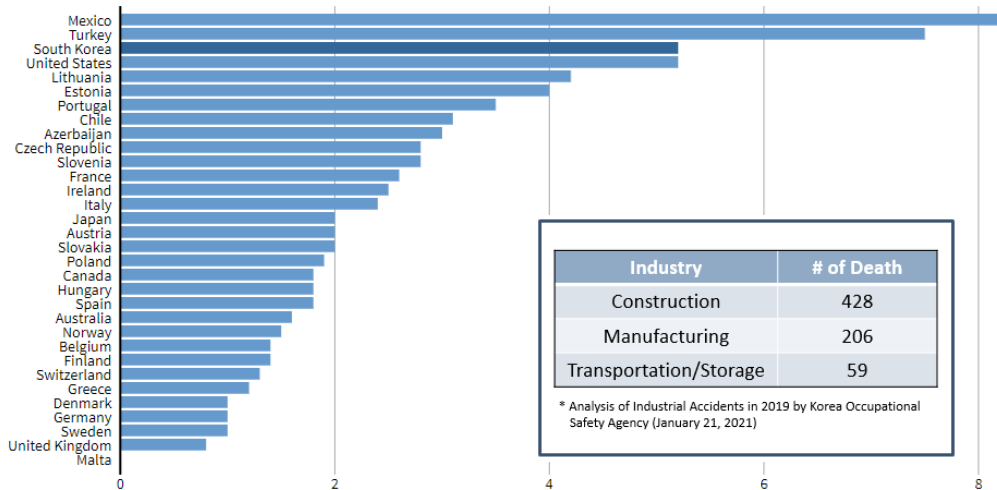
- Recently, the Ministry of Justice started legislative procedures for the Framework Act on Human Rights Policy to "establish a pan-governmental system and systemize policies to protect human rights of the people" (Nov. 17, 2020)
- To spread human rights management, the Act imposes (i) **the state and local governments' obligation to establish a system to prevent corporate human rights violations on**, and (ii) **the companies' obligation to endeavor to provide remedies for victims of human rights violations through management activities**

3

3

## Frequent Serious Accidents

KIM & CHANG



Fatal occupational injuries per 100,000 workers  
 South Korean government; International Labour Organization  
 Ju-min Park | REUTERS GRAPHICS (<https://fingfx.thomsonreuters.com/gfx/editorcharts/SOUTHKOREA-SAFETY/0H001QXE3909/index.html>)

4

4

## Serious Accidents Punishment Act

KIM & CHANG

- Serious Accidents Punishment Act (or the SAPA) is a safety and health legislation enacted by the Korean National Assembly in January 2021
- SAPA imposes criminal punishment on businesses and their responsible management personnel for failure to fulfill prescribed duties in the event of “Serious Accident”
- SAPA reflects the growing regulatory trend in Korea to emphasize the establishment and maintenance of an effective compliance system that can identify, monitor and remedy relevant risk factors



Effective dates of  
SAPA implementation

**January 27, 2022** (50 or more employees)

January 27, 2024 (5 or more but fewer than 50 employees)

January 27, 2024 (construction projects with value under KRW 5 billion)

5

5

## Who is Responsible?

KIM & CHANG

### “Responsible Management Personnel” (or RMP)

#### Top decision-maker

- Authority and responsibility to
  - represent the business
  - generally and comprehensively manage the business

In Korea, this person is generally  
the Representative Director

OR

#### A person in charge of safety and health matters

- Level of authority and responsibility over safety and health matters comparable to the top decision-maker (in particular, the final sign-off authority on all matters relating to safety and health, including personnel and budgeting)
- In theory, possible approach
  - Actual practice will be key, looking at the constitutional documents, company regulations, actual reporting lines and sign-off authority, among other things

6

6

## What Should be Done?

KIM & CHANG

- 01** Establish **safety and health management system**, including necessary personnel, budget, inspection and take measures to implement such system
- 02** In case of an accident, prepare a plan to **prevent recurrence** and take measures to implement such plan
- 03** Adopt appropriate **measures to improve the safety and health management system** in the event the business has been issued **corrective orders** by governmental entity
- 04** Take managerial measures necessary for the **performance of obligations under safety and health laws**

7

7

## RMP's Duties in Practical Terms

KIM & CHANG



Build appropriate systems, processes and protocols to prevent accidents and to deal with accidents when they occur



Secure necessary personnel and budget and put them to work



Monitor the implementation of safety and health measures and ensure remediation where deficiency is found

8

8

## Obligations as to Subcontractors

KIM & CHANG



If a business engages in subcontracting, service or delegation arrangement with a third party

If the business is responsible for exercising **de facto** control, operation and management over the relevant facilities, equipment or location

- Then the business owes duty to secure safety and health for both the third party workers

9

9

## Global RE100 Initiative

KIM & CHANG



Voluntary global corporate initiative led by The Climate Group / CDP

- Global companies commit to 100% reliance on renewable energy by no later than 2050
- More than 370 members, including Apple, BMW, Facebook, General Motors, Google, Johnson & Johnson, LEGO, Microsoft, NIKE, PepsiCo, etc.

### Policy Goals

- RE100 companies achieve targets via (i) self-generation, (ii) **PPAs**, (iii) **indirect PPAs** or “green tariffs” with utilities, (iv) green pricing (purchasing certificates of origin or REGOs for green premium) and (v) pressuring suppliers to go green

10

10



## Global RE100 Initiative

KIM & CHANG

### Campaign Objective

**Companies source 100% of their electricity consumption needs from renewable energy ("RE") sources**

- Officially launched during the UN Climate Summit at Climate Week NYC in September 2014. Led by the Climate Group in partnership with the Carbon Disclosure Project (CDP) committee
- Member companies voluntarily set their annual goals, although the recommendation is to achieve 60% by 2030, 90% by 2040, and 100% by 2050

### Verification Method

**Member companies' use of renewable energy is verified through a third party agency**, and their performance results are disclosed through the CDP Committee's annual report

Source: Korea Energy Convergence Association, Presentation Materials for "Opportunity for Renewable Energy- RE100 Implementation Plan and Response Strategy Seminar," February 3, 2021; Korea Energy Agency, "Renewable Energy Policy and Domestic and Foreign Trends regarding RE100," September 2020

11

11

## Barriers in Korea (Jan. 2022)

KIM & CHANG

**2%**  
**of members' electricity demand in Republic of Korea is currently from renewables**

*"Members reporting facing barriers in the Republic of Korea do not report sourcing any renewable electricity there at all. This shows the degree of challenges the market is facing: **credible procurement options are currently severely limited.**"*

Source: RE100 Annual Disclosure Report 2021

12

12

## Electricity Market Structure in Korea

KIM & CHANG

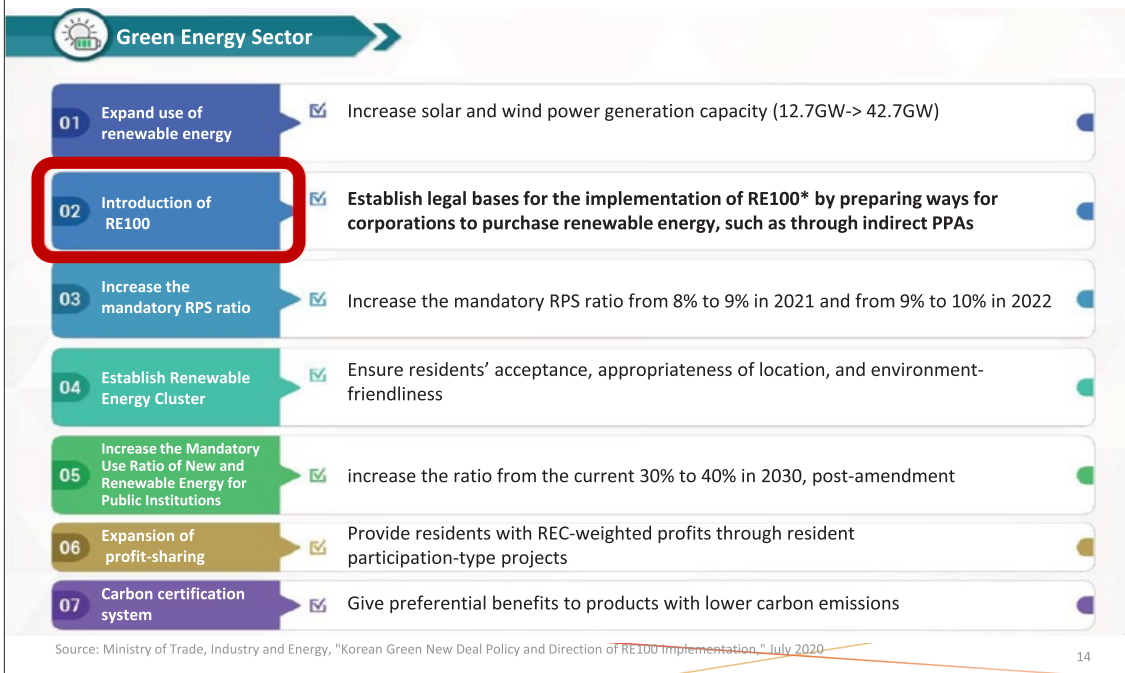


13

13

## Green New Deal Policies in Korea (Jul. 2020)

KIM & CHANG



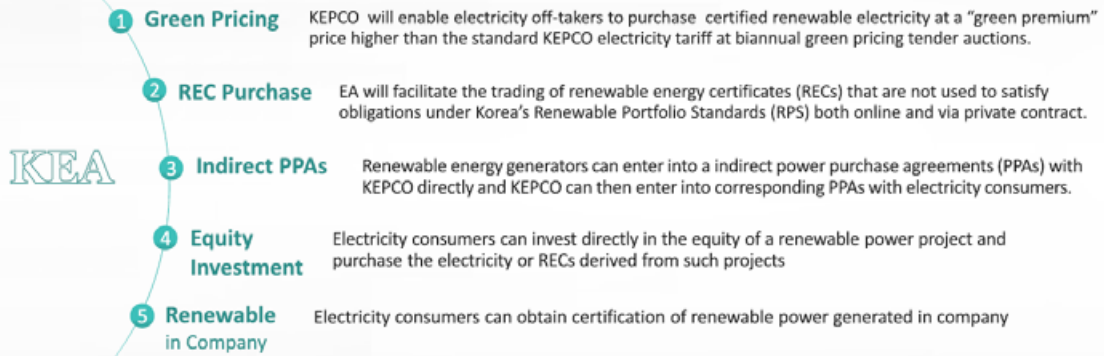
14

14

## K-RE100 Implementation Programs

KIM & CHANG

Korea Energy Agency (KEA) introduced  
**five RE100-implementation schemes on January 1, 2021**

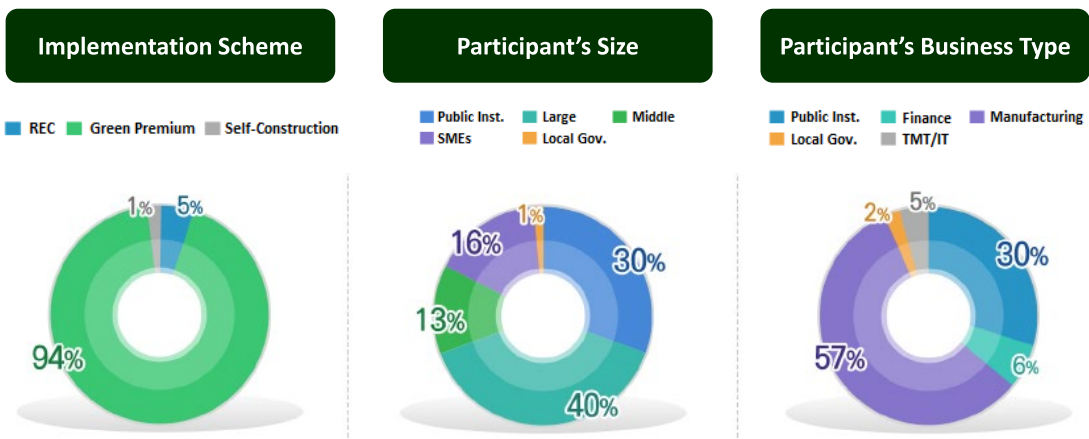


15

15

## Status of K-RE100 (Dec. 2021)

KIM & CHANG



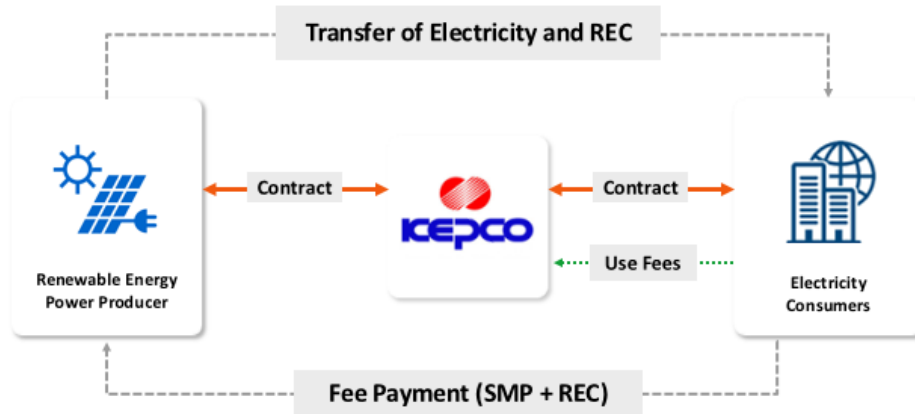
Source: Introduction and Progress of K-RE100 Scheme

16

16

## KEPCO signs the first third-party PPA with Hyundai Elevator

2022.04.11 12:55:22



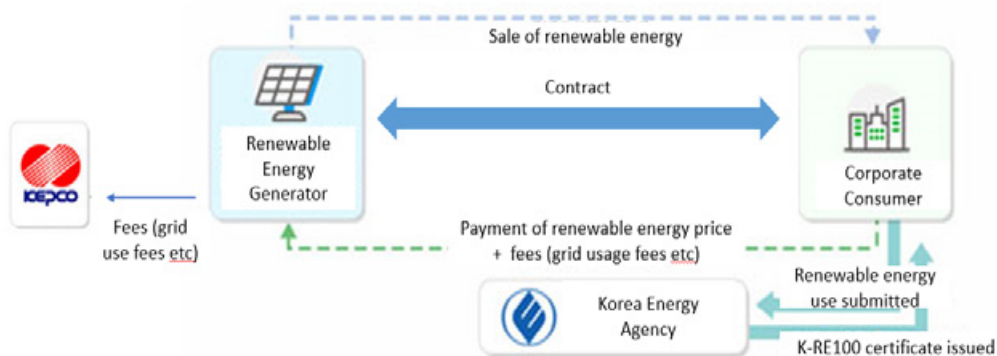
17

17

## South Korea's first renewables-linked PPA

Korean beauty products supplier Amorepacific has agreed to buy electricity from 5MW of renewables operated by LNG provider SK E&S. The 20-year deal is South Korea's first step into unsubsidized renewable energy development.

MARCH 23, 2022



18

18



## Things to Consider

KIM & CHANG

- Businesses started to look into PPAs and other RE100 implementation programs.
  - For multinational corporations, it is important to **assess** which implementation programs would be best suitable, taking into account how compatible they are with those applicable to the HQ (*e.g.*, whether reduction in carbon emission would be recognized, double-counting issues, etc.) and **establish** an implementation strategy.
- Relevant notifications have yet to be finalized.
  - This would be closely related to the new administration's policy direction.

19

19

# Thank you

KIM & CHANG

39, Sajik-ro 8-gil, Jongno-gu,  
Seoul, 05170, Korea

T +82 2 3703 1114  
F +82 2 737 9091/9092

[www.kimchang.com](http://www.kimchang.com)  
[lawkim@kimchang.com](mailto:lawkim@kimchang.com)

20

### Disclaimer

These materials are provided for general informational purposes only and should not be considered as reflecting legal opinions of the firm nor relied upon in lieu of specific advice. Recipients of these materials, whether clients or otherwise, should not act or refrain from acting on the basis of any information included in this material without seeking appropriate legal or professional advice. These materials are property of Kim & Chang, and therefore, while recipients may view the materials, they may not otherwise distribute, disclose or provide to third parties without Kim & Chang's prior written consent.

---

## AMCHAM SUSTAINABILITY SEMINAR 2022

---

BUILDING A WORLD THAT WORKS FOR TOMORROW  
더 나은 내일을 위한 세상

---



### **Dongwon Kim** 김동원

**Government Engagement Director, GE Korea**  
GE 코리아 대외협력총괄이사

---

Dongwon Kim joined GE as Government Engagement Director in May 2021. In this role, Dongwon is responsible for planning and executing government and external engagement for all of GE Korea's entities including Aviation, Gas Power, Healthcare and Renewables businesses. Dongwon has almost 20 years of experience in Government Affairs, Corporate Affairs and Regulatory Affairs working for multinational industry leaders and business organizations.

Prior to GE, he worked for Philip Morris International as the External Affairs Strategy Manager supporting the successful launch of PMI's new Reduced Risk Product in Korea by establishing a CA launch strategy. He held important roles within PMI and moved to Philip Morris Asia as Government Affairs Manager based in Hong Kong, managing 18 markets in Asia on government affairs strategy and engagement plans. He also worked for Pfizer Pharmaceuticals developing and executing strategies for stakeholder engagement.

Before joining the private sector, Dongwon led the Government Affairs and PR team at the American Chamber of Commerce in Korea. In this, role he developed chamber policies and positions on economic and political issues and acted as a channel for regulatory and policy initiatives covering 1,100 member companies and 35 industries.

Dongwon represented the US Chamber of Commerce's Korea operations as the Chief Representative for US-Korea Business Council to represent U.S. business interests. He oversaw USKBC Chairman (William Rhodes, Chairman, President & CEO of Citibank)'s engagement with President Lee Myung-bak, Prime Ministers, Senior Members of the National Assembly and other ministries to support the KORUS FTA and USKBC programs.

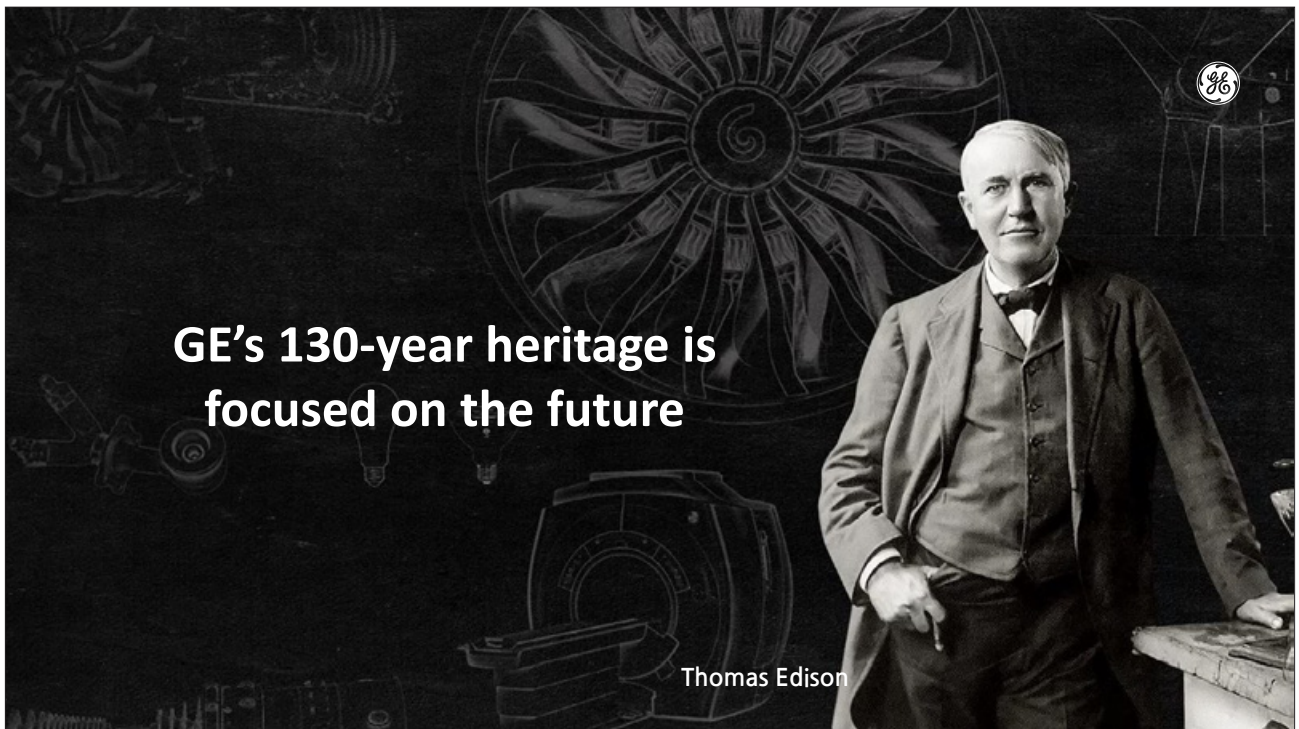
Dongwon holds a Bachelor of Arts in English Language and Literature from Korea University, and a Master of Business Administration from the Kelley School of Business, Indiana University. Dongwon is an active member of AMCHAM Korea, leading the Government and International Affairs committee as a Co-chair. Dongwon lives in Seoul, Korea with his spouse and daughter.



1



2



3



4



*"GE is committed to tackling the world's biggest challenges with a clear alignment to sustainability—leading the energy transition to drive decarbonization, developing precision healthcare that personalizes diagnoses and treatments, and building a future of smarter and more efficient flight. We are dedicated to improving our impacts and lifting up our people, communities, and planet."*

**H. LAWRENCE CULP, JR.**  
Chairman of the Board and Chief Executive Officer



5

### Our Reach

#### ENERGY TRANSITION



**1/3 of the world's**  
**electricity** generated  
with GE equipment

#### PRECISION HEALTHCARE



Serve more than  
**1B patients**  
per year

#### FUTURE OF FLIGHT



**Largest &  
youngest**  
aviation fleet

**174,000**  
employees globally

Customers in  
**170** countries

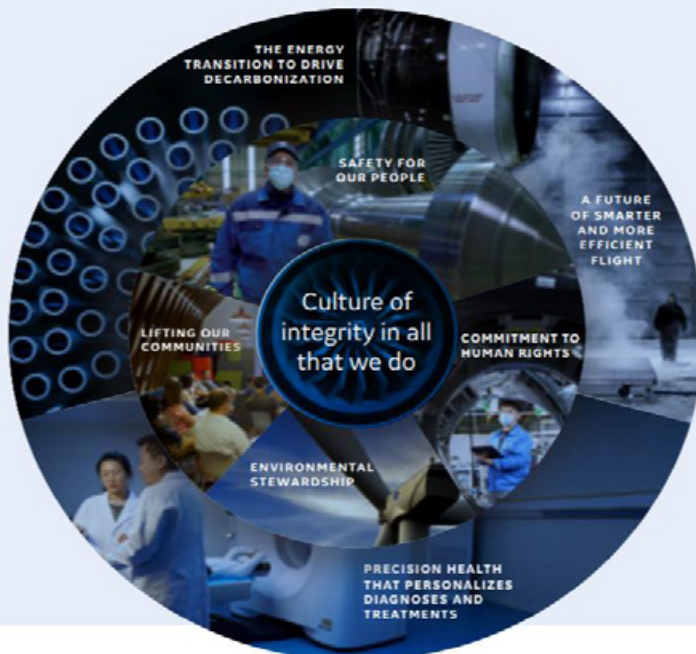
**\$4.9M**

in global  
COVID-19 relief  
since the  
pandemic began



6

## Our Sustainability Priorities



## Our Efforts

**2030 carbon neutrality** commitment (Scope 1/2 emissions)

Ambition to be a **net zero company by 2050**, including Scope 3 emissions from use of sold products

Committed to **innovating technologies** for global decarbonization, sustainability

Planned exit from **new-build coal business**

Invested **\$3.8B** in 2020 R&D companywide\*

\* GE and Customer & Partner funded

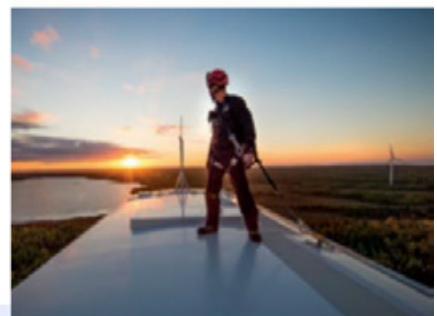
7

## Innovating Technology for a Sustainable Future



### Leading the Energy Transition

- GE generate one-third of the world's electricity.
- Plays a central role in meeting this demand and lowers carbon intensity of energy.
- GE's innovative technology and expertise help our customers meet their decarbonization goals.



### OUR SOLUTIONS

GE's **Haliade-X turbine** is the world's most powerful offshore wind turbine built today.

GE's **Cypress onshore wind turbine** offers revolutionary two-piece wind blades, enabling increased output from hard-to-reach sites.

**World-record setting HA turbines** are the most efficient gas turbine and a force multiplier to accelerate decarbonization.

GE technology and software help modernize the **physical and digital grid** to improve resiliency and enable more renewables.

GE is investing in advanced nuclear like **BWRX-300** to provide carbon-free power generation and help countries meet climate goals.

8



## Innovating Technology for a Sustainable Future



### Advancing Precision Health

- Delivering on the future of HC is about enabling precision health
- Making this a reality requires merging clinical medicine and data science
- GE is focused on building an intelligencebased healthcare system and a more sustainable world



#### OUR SOLUTIONS

**Edison™ intelligence applications** are designed to enable better patient care and increase access to care, and with **Edison Marketplace**, hospitals can test-drive AI-powered applications.

**Vscan Air handheld ultrasound** improves healthcare access and joins the Vscan Family of technologies with **30,000 units in more than 100 countries**.

**GE's Command Center digital solution** helps hospitals reduce waste and deliver care safely to more patients, more efficiently. In 2020, the system's efficiency benefit at Tampa General Hospital was equivalent to taking 4,000 cars off the road.

9

## Innovating Technology for a Sustainable Future



### Developing the Future of Flight

- GE and Safran manufactured through CFM\* have resulted in today's aircraft engines emitting 40 percent less CO2 than engines manufactured in the past.
- GE is supporting initiatives to approve and adopt 100% Sustainable Aviation Fuel and investigating H2 as the zero-carbon fuel



#### OUR SOLUTIONS

**GE9X** is the world's largest and most powerful aircraft engine and the most efficient engine we have ever built on a per-pounds-thrust basis, designed to deliver up to **10% greater fuel efficiency** than its predecessor.

The **LEAP\*** engine uses Ceramic Matrix Composite components and 3D printed parts, helping to make it **15 percent more fuel efficient** and produce fewer emissions compared to the CFM56-7B engine.

**FlightPulse®** is a flight analytics tool that helps airline pilots improve safety and operational decision-making, such as increasing pilot adoption of fuel-saving procedures.

\* CFM International is a 50-50 joint company between GE and Safran Aircraft Engines and produces LEAP and CFM56 engines.

10

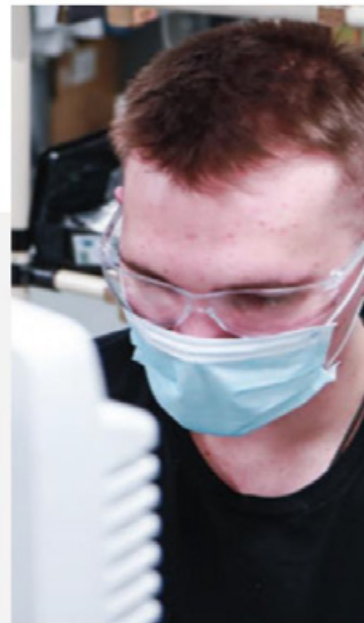
## Innovating to Address COVID-19

### IMPROVING THE SAFETY OF EMPLOYEES

- GE established an enterprise-wide cross-functional internal **COVID-19 Task Force** to protect the health and safety of our employees globally and maintain business continuity.
- We continuously engaged in dialogues with our unions as a key part of our worker safety response efforts.
- With **GE's Employee Relief Fund**, we helped thousands of employees around the world facing unprecedented challenges due to COVID-19.

### SUPPORTING OUR COMMUNITIES

- GE quadrupled ventilator production and increased production capacity and output for other critical medical equipment to help doctors diagnose and treat COVID-19.
- The **GE Foundation** contributed to global and community health and disaster relief efforts, helped deliver personal protective equipment to U.S. healthcare workers in urgent need, and worked to shore up healthcare systems in Southeast Asia and Africa with trainings, infrastructure, and equipment.



11

## Applying Lean Principles to Sustainability



Our lean operating philosophy supports our long-term growth strategies and helps us examine processes and continually improve them by solving problems at their root cause. Lean principles allow us to identify where we can ensure worker safety, limit emissions, eliminate hazardous waste, reduce our footprint, and deliver essential, life-saving products quickly and efficiently.

### LEAN PRINCIPLES IN ACTION

- A critical component of GE's ongoing operational improvements are "treasure hunts," which are essentially targeted lean "waste walks" to identify energy waste, drive efficiency, and reduce greenhouse gas emissions.
- These processes bring together a local team to identify any source of waste at a worksite: open doors, lights and machines left on, and wasted materials, as well as opportunities to invest in our operations to optimize performance.
- A 2020 exercise at GE Aviation's Celma facility in Brazil—which served more than 9,000 engines in 2020—resulted in an 11 percent reduction in energy use across the site.

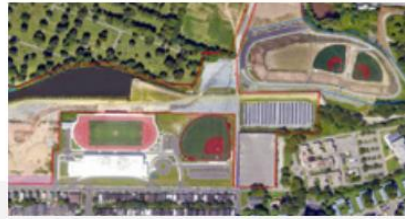
12

## Our Sustainability Priorities in Action



### 2030 CARBON NEUTRAL GOAL

- In 2020, GE committed to a carbon neutrality pledge by 2030 for GE's Scope 1 and Scope 2 emissions.
- We anticipate that the majority of our progress toward meeting our 2030 goal will be achieved through absolute reductions of direct emissions and energy use achieved through operational investments, smart power sourcing, and elimination of waste.



### GE'S ENVIRONMENTAL JUSTICE BROWNFIELD INITIATIVE

- GE is committed to prioritizing the cleanup of contaminated, vacant properties, known as brownfields, that can be put to a greater community benefit or public good.
- As part of our commitment to environmental justice (EJ), in 2021 we're focusing a new initiative and investment in EJ community properties with more challenging commercial cases for redevelopment.
- Using the U.S. Environmental Protection Agency's (EPA) screening tool, EJSCREEN, GE has reviewed its inventory of 100+ underused properties in the U.S. to identify those located in disadvantaged communities that are most heavily burdened by historic industrial activity and least able to mitigate it.



### GE FOUNDATION'S NEXT ENGINEERS INITIATIVE

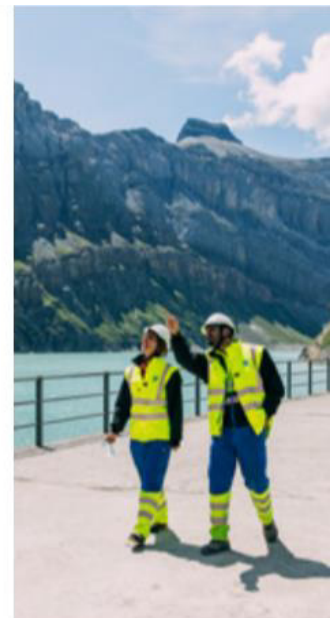
- GE Foundation is committing up to \$100 million to create the Next Engineers program—a global college-readiness initiative to increase the diversity of young people in engineering.
- The program will focus on students underrepresented in engineering in grades 8 to 12 (ages 13 to 18), provide hands-on exposure to engineering concepts and careers, and ultimately award scholarships to pursue engineering degrees.

13

13

## GE's ambition to be a net zero company

- Setting a further ambition for GE to be a **net zero company by 2050.**
- Look forward to partnering with customers to **help them meet their own ambitions.**
- Address the world's needs for **reliable, affordable, and sustainable power and safe, efficient flight.**
- Continue to pioneer the technologies the world needs to **move toward a net zero future.**



14



GE는 '지속가능성 보고서'를 발표했습니다

# AMCHAM Sustainability Seminar 2022

June 9, 2022  
Conrad Seoul

Solutions for ESG risk factors  
that companies need  
to overcome in 2022



## PANEL DISCUSSION

**Moderator**     **Yonghee Yoon**  
Partner, Yulchon LLC

**Panelists**     **Khoi Do**  
Director, Market Development & Innovation, UL  
**Seong Young Yoon**  
Sustainability Manager, HP Korea  
**June Yong Lee**  
Foreign Attorney, Kim & Chang  
**Dongwon Kim**  
Government Engagement Director, GE Korea

# AMCHAM SUSTAINABILITY SEMINAR 2022

## PANEL DISCUSSION / 패널 토론



Moderator

**Yonghee Yoon 윤용희**

**Partner, Yulchon LLC**

**법무법인(유) 올촌 변호사**

Yonghee YOON, a partner at Yulchon, primarily practices in regulation fields including ESG (Environmental, Social and Governance), EHS (Environment, Health and Safety), Energy and antitrust. Mr. Yoon began his career at Yulchon in 2009 after finishing his service as a military advocate (judicial officer). Since then, he has mainly focused on legal issues in connection with ESG, EHS, antitrust and other regulatory practices. As a result of his lifelong efforts, not only does he have practical knowledge and experience in various legal fields, but he is also serving as an adjunct law professor, fulfilling his social duties by nurturing future lawyers. Driven by an aspiration to share his experience, knowledge and research findings with an entire society, he has published various articles and books regarding his major practice areas, including 'the Impacts and Implications of CERCLA on the Soil Environmental Conservation Act of the Republic of Korea' and 'Extraterritorial Application of US Antitrust Law' etc. based on his abundant work expertise and experience, and positive client feedback, was honored as "Lawyer of the Year" in the ESG (Environmental, Social, and Governance) sector at the Korean Law Firm Awards 2022 conducted by Law Times, a renowned legal newspaper in Korea, which is based on the results of the survey among in-house lawyers.

### Education

- 2014 Stanford Law School, Environmental Law and Policy, LL.M.
- 2014 Stanford University, Hoover IP2 Summer Teaching Institute
- 2012 Seoul National University, Law/Environmental and Energy law, Ph.D./A.B.D.
- 2008 Seoul National University, Environmental law, M.A.
- 2006 Judicial Research and Training Institute, the Supreme Court of Korea
- 2004 Seoul National University, LL.B.

### Experience

- 2009-present Partner, Yulchon LLC
- 2022-present Member, ESG Committee, Korea Environment Coporation
- 2022-present Member, ESG Committee, Korea Trade Insurance Coporation
- 2022-present Director, Korean Society for Quality Management
- 2022-present Member, Alternative Investment Committee of the Ministry of Land, Infrastructure and Transport
- 2020-present Member, Internal Audit Committee, Ministry of Environment
- 2021-present Director, Korean Society of ESG
- 2021-present Member, Sustainability Committee, Korea Public Relations Association
- 2020-present Lecturer, Law Times Korea: Legal Edu (Environmental Law)
- 2018-present Research Director, Korean Environmental Law Association
- 2017-present Legal Advisor, Korea Western Power Co., Ltd.
- 2016-present Adjunct Professor, Jeju National University Law School
- 2012-present Bar Examiner, Ministry of Justice
- 2019-2021 Legal Advisor, Korea Racing Authority
- 2020-2021 Adjunct Professor, Hanyang University School of Law (Environmental law)

- 2018-2019 Legal Advisor, Korea South-East Power Co., Ltd.
- 2016-2017 Legal Advisor, Ministry of Environment
- 2015-2017 International Committee Member, Seoul Bar Association
- 2014-2015 Visiting Lawyer, Sidley Austin LLP
- 2014-2015 Board Member, Korean American Bar Association of Northern California
- 2011-2012 Seconded, GS Caltex
- 2006-2009 Judge Advocate, Korean Army

### Awards/Recognition

- 2022 Lawyer of the Year (ESG), Law Times
- 2012 Commendation, the Minister of Strategy and Finance of Korea

### Articles/Papers

- Legislative Changes in Sustainable Finance Brought By ESG and Countermeasures Therefor: Discussions on Taxonomy of EU and South Korea, BFL, Center for Financial Law, Seoul National University (co-authored) (2021)
- ESG and Intellectual Property, Presentation at 2021 International Symposium on Intellectual Property (2021)
- The Dilemmas of Law, Bobmunsa (co-author) (2020)
- Environmental Law: Cases & Materials, Pakyoungsa (co-author) (2019)
- "The Impacts and Implications of CERCLA on the Soil Environmental Conservation Act of the Republic of Korea," Transnational Environmental Law 6(1), Cambridge University Press (2017)
- "Can Audit Fee Standard create harmony with Antitrust Law?" Monthly publication, KICPA (2017)
- "EU environmental law," the Korea Legislation Research Institute (co-author) (2016)
- "Extraterritorial Application of US Antitrust Law," Journal of Korean Competition Law, Korean Competition Law Association (2015)
- "South Korea Chapter in International Environmental Law Book," ABA Section of Environment, Energy and Resources (co-author) (2014)
- "The Method for Judicial Review on Substantive Deficiency of Environment Impact Assessment," Justice, The Korean Legal Center, volume 130 (2012)
- "On the Proposed Emission Trading Act - Evaluations with Suggestions in Light of the Financial Investment Services and Capital Markets Act," The Korean Journal of Securities Law (co-author) (2010)
- A Study on the Interpretation of Article 7 Paragraph 2 of the Framework Act on Environmental Policy, Master's Thesis, Seoul National University (2008)

---

# AMCHAM SUSTAINABILITY SEMINAR 2022

---

## PANEL DISCUSSION / 패널 토론

---



### **Khoi Do** 코이 도

**Director, Market Development & Innovation, UL**  
UL 마켓혁신개발팀장

---

Thien-Khoi (Khoi) Do is the Director of Market Development & Innovation for the Asset & Sustainability Performance portfolio at UL. In this role, Khoi collaborates across business units, establishes strategic partnerships, and supports the launch of innovative solutions related to sustainability, ESG performance, healthy employees & buildings, and renewable energy. Over his 14-year career with UL, he has served in several roles across multiple functions. Whether it's been supporting international trade and supply chain networks, helping to establish UL's global accounts program, or launching new services and digital platforms, Khoi has a proven record of building innovative solutions across multiple industries and markets.

Before his time at UL, Khoi was a Product Manager and Market Analyst for Magna International, one of the largest automotive suppliers in the world. Khoi earned his Bachelor of Business Administration degree, with a focus on Corporate Strategy and International Business, from the Ross School of Business at the University of Michigan.



---

## AMCHAM SUSTAINABILITY SEMINAR 2022

---

### PANEL DISCUSSION / 패널 토론

---



### **Seong Young Yoon** 윤성영

**Sustainability Manager, HP Korea**  
HP 코리아 지속가능성팀 부장

---

Seong Young Yoon manages compliance processes for environmental regulations in Korea and takes part in HP sustainability programs in Asia Pacific region. He has more than 10 years of experience in this area, and also has strong IT background with another 10+ years of career as IT consultant in Hewlett-Packard Enterprise prior to join sustainability domain.

# AMCHAM Sustainability Seminar 2022

## Our Generous Partners



Since 1953  
**AMCHAM**  
American Chamber of Commerce in Korea